

# Welcome to our **WAITING ROOM**

You will be muted upon entry and your video turned off. Thank you!

## Redesigning with Transitions in Mind: A Guided Pathways Webinar

Friday, April 17  
10 a.m. - 12 p.m.

# Redesigning with Transitions in Mind: A Guided Pathways Webinar

Friday, April 17  
10 a.m. - 12 p.m.



# Technical Announcements

- Webinar Technology
  - When you join you will be MUTED
  - Your video will be OFF upon entry to zoom
  - If you are joining by phone and computer/tablet, please connect your phone to your computer/tablet (#participantID#)
- For any technology issues please ask for help in the chat and we will message you privately for support

# The Transitions Webinar CLP Team



**Naomi Castro**  
Senior Director  
Career Ladders Project



**Amal Amanda Issa**  
Director  
Career Ladders Project



**Sherry Shojaei**  
Program Manager  
Career Ladders Project



**Eder Flores**  
Program Associate  
Career Ladders Project

# Guided Pathways Workshops & Webinars

Reimagining  
**Counseling**  
and **Student**  
**Services**  
Workshop



Redesigning  
with **Careers** in  
Mind  
Workshop



Redesigning  
with  
**Transitions** in  
Mind  
Webinar



# Redesigning with Transitions in Mind

Colleges are redesigning transitions to college to reach and support students, especially those furthest from opportunity. This series of statewide webinars explores how colleges and their partners are reimagining transitions to college—such as early onboarding, bridge programs and dual enrollment—within the Guided Pathways framework.



*This webinar is part of a series produced by Career Ladders Project with funding from the California Community Colleges Chancellor's Office..*

# Dual Enrollment Framework

## Connection

What connection means: K-12 schools and districts, community colleges, four-year institutions, employers, and community organizations connect through collective work focused on student success.

## Intentional Design

What intentional design means: Serving students with pathways based on local needs that include scaffolded supports, clear milestones, and multiple on ramps and off ramps.

## Sustainability

What sustainability means: Embedding thoughtful partnerships at the core of our institutions by creating new cultural norms and structures to support them.

# Learning Outcomes

Participants will:

- Discover promising examples of how California community colleges are building partnerships and creating intersegmental **connections**.
- Learn how colleges are **intentionally designing** transitions to strengthen student supports and achieve equity.
- Explore **practices** and **structures** colleges have created to ensure **sustainability** of this work on their campuses and with partners.



# Transitions Webinar Presenters

Early College:  
Entering the path in 9th grade

**BAKERSFIELD  
COLLEGE**

The Virtual Campus:  
Retaining Sense of Belonging  
Amidst COVID-19 Transitions



**Chaffey College**

# How to ask questions during the webinar

Use the chat function on zoom to type your question.

- **If you have a question for a panelist** indicate the college before your question. ex: *BAKERSFIELD How do you....?*
- **If you have a general question** regarding dual enrollment use the following notation: *GENERAL What are colleges....?*
- **If you have a tech issue** use the following notation: *“TECH I can’t hear.”*

# Transitions Webinar Presenter

Early College:  
Entering the path in 9th grade

**BAKERSFIELD  
COLLEGE**

---

# Early College: Entering the path in 9th grade

AN EQUITABLE MODEL FOR EXPANDING GUIDED PATHWAYS

Redesigning with Transitions in Mind:

A Guided Pathways Webinar

April 17, 2020



# Bakersfield College & McFarland High School Early College



**Nicole Alvarez**  
Early College Program Manager  
Bakersfield College



**Cynthia Zamora**  
Early College Counselor  
Bakersfield College



**Christopher Pelletier**  
Dual Enrollment Instructor  
McFarland High School Early  
College

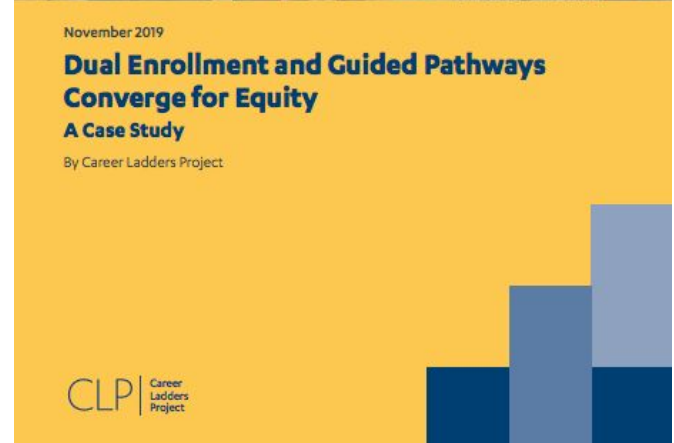


**Joshua Rizo**  
Early College Student  
McFarland High School Early  
College

# Dual Enrollment and Guided Pathways Converge for Equity



**Dr. Sonya Christian**  
Bakersfield College President



# Outcomes

- Audience will understand...
  - The scale up of dual enrollment at Bakersfield College and the connection to Guided Pathways from an administrative perspective
  - A college counselors role in the early college work, including actions taken to respond to COVID-19 closures and still provide supports
  - The perspective and experiences of a high school early college (dual enrollment) instructor, including transition to distance learning during COVID closures
  - Perspective and experience of an early college (dual enrollment) student, including transition to distance learning during COVID closures
- Audience will have a chance to ask presenters questions to deepen understanding.

# BAKERSFIELD COLLEGE SNAPSHOT



**5,000** square mile service area

**36,992** students

**80%** First Generation

**67%** Latinx

**7,697** dual enrollment students

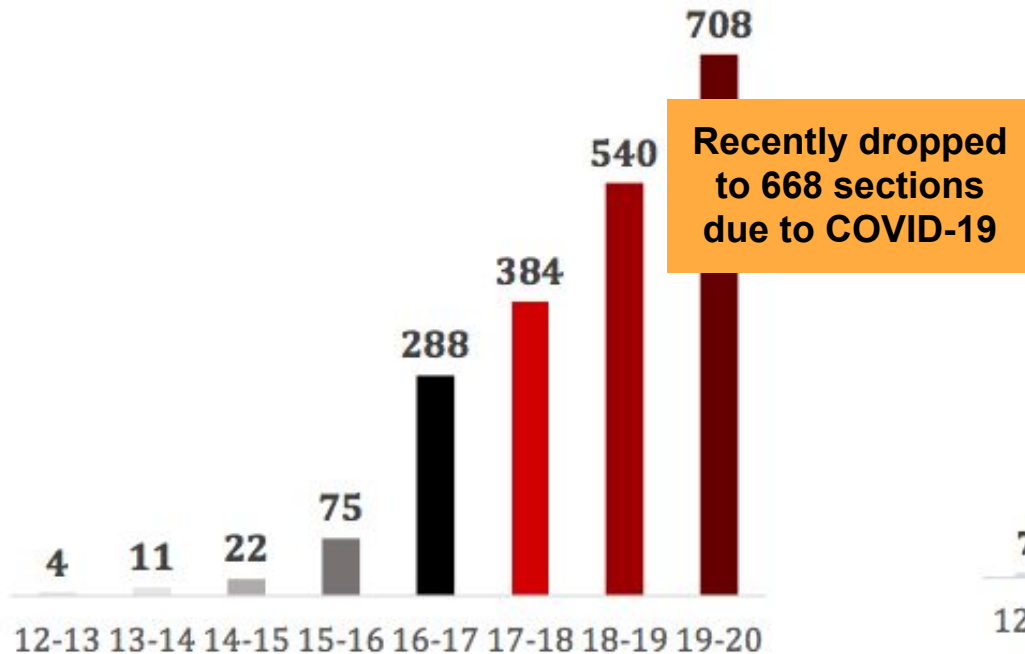




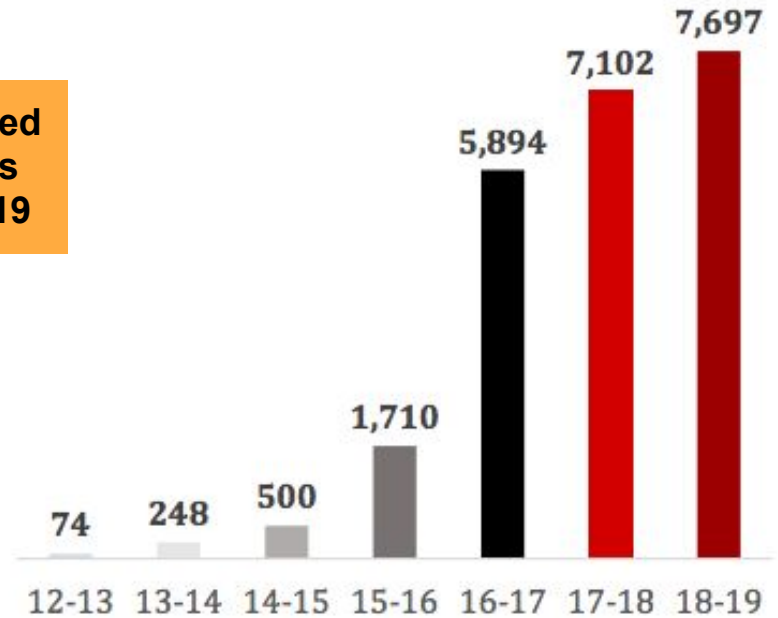
# **EARLY COLLEGE 1.0 to 2.0:** **From Random Acts of Dual Enrollment to** **Structured Pathways to Completion**

# TIMELINE TO SCALE

## Dual Enrollment Sections

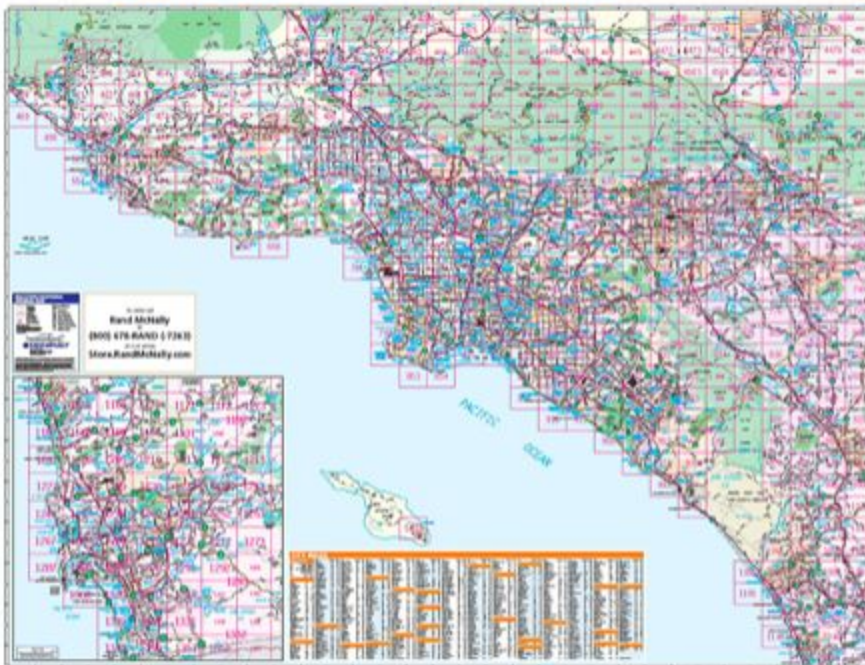


## Dual Enrollment Students

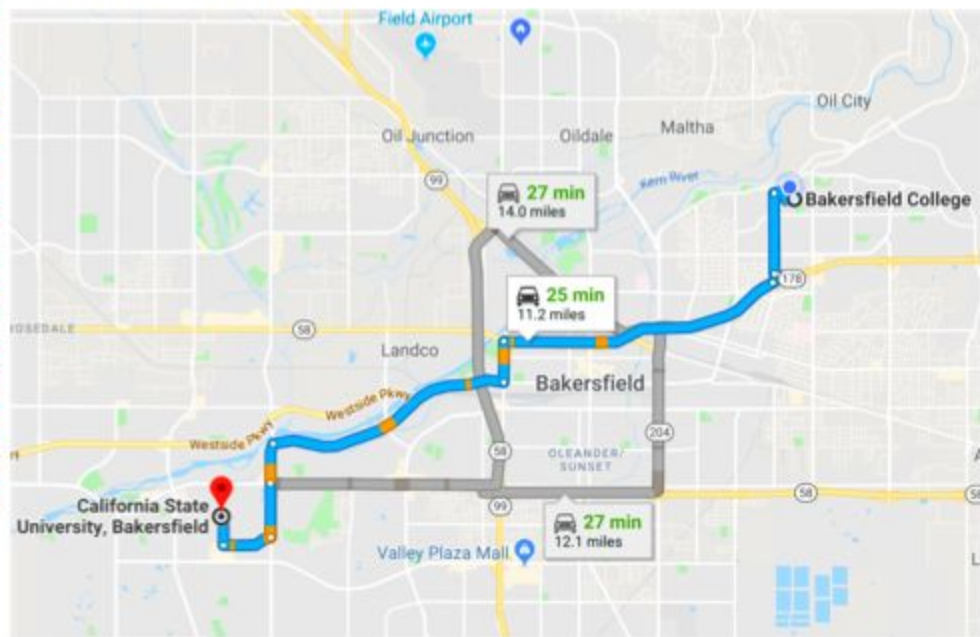


# From this...

Thomas Guide SOUTHERN CALIFORNIA HIGHWAY AND ARTERIAL



# To this...



# Early College Pathways to Completion



**Guided  
Pathways**

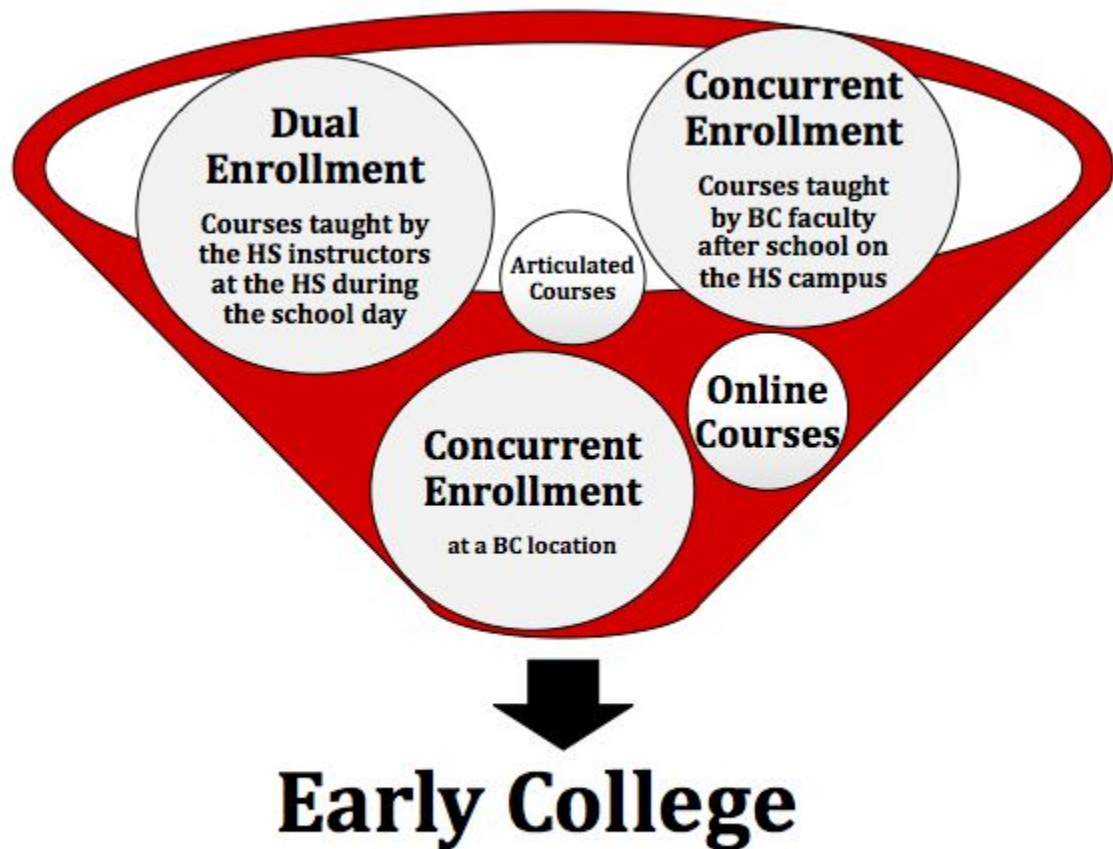
**Dual  
Enrollment**

**Early  
College**

*Have a question? Write it in the chat..*

*Ex: BAKERSFIELD how do you....*

**EARLY COLLEGE**



High school students starting college pathways as early as the 9<sup>th</sup> grade

# Support Services for Early College Students

My role as an Early College Counselor:

- Provide support and guidance to High School/Bakersfield College students within the Early College Program
  - Includes Dual and Concurrent Courses
- Manage student enrollment and assist students with pending issues
- Counsel students
  - Program selection/completion
  - Intervention services



*Have a question? Write it in the chat..*

*Ex: BAKERSFIELD how do you....*

# Support Services for Early College Students

Supporting student in their Pathways:

- Provide group and one-on-one counseling to Early College Students
  - Intervention Counseling
  - Pathway selection counseling
- Maintained open communication with Early College instructors and High School Counselors regarding student progress
- Weekly High School visits and presentations

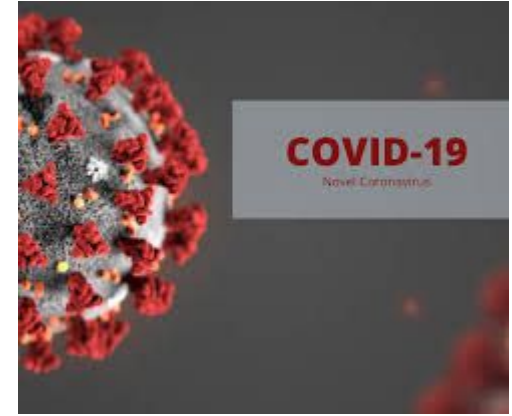


# Support Services for Early College Students

## COVID-19 Impact

- High Schools Remote Learning environment
- Bakersfield College Remote Counseling Services

Delima: How do I continue to support students and staff remotely to ensure successful enrollment and completion?



*Have a question? Write it in the chat..*

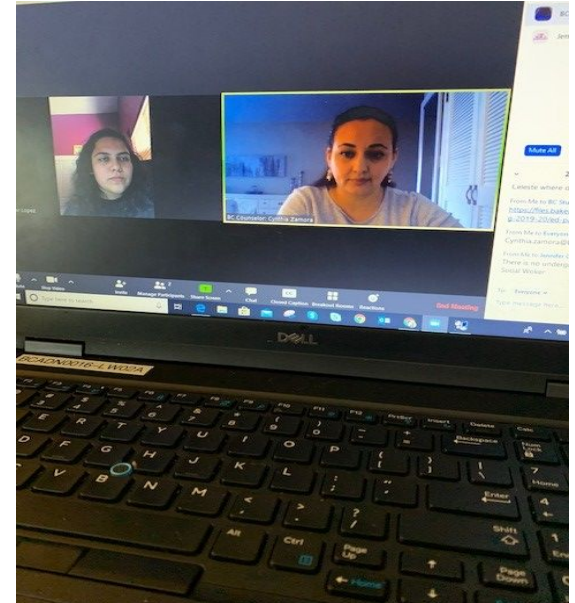
*Ex: BAKERSFIELD how do you....*



# Support Services for Early College Students

Practices Implemented for Remote Student support:

- Remind 101
- Weekly Zoom Office Hours
- Zoom Student Workshops
- Email support
- Google Voice/Text
- Student Workers
  - “How To” emails
  - Student outreach
- Consistent communication with High School and Bakersfield College staff



# From the Perspective of an Early College Instructor

- Christopher Pelletier
- 8 years teaching experience
  - 3 at McFarland Early College
- Experience in both seated, online, and mixed college classes
  - Try to incorporate best practices I've seen in those settings into my own classes
- Impoverished background
- Took college classes in high school
  - 1 AP class and 1 BC class
  - Immensely helpful
- First piece of advice:
  - College is not high school. The students need a different mentality to succeed here.



# From the Perspective of an Early College Instructor

- Student Population
  - 958 Students
  - 85.39% Socio-Economically Disadvantaged
  - 16.18% ELL + RFEP
  - 8.8% Students w/ Disabilities
  - 9.91% SPED
  - 1.7% Homeless
- Those that go to college will likely be the first in their family to do so
- Independent and mature
- Dual Enrollment gives a jump start on college
  - Saves \$\$ in the long run



# From the Perspective of an Early College Instructor



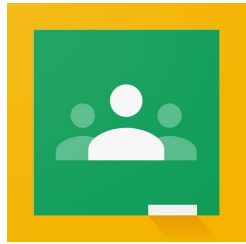
- Teaches History 17A&B (U.S. History)
- Contributes directly to our:
  - Associates Degree for Transfer Pathway
  - General Education Certificates Pathway
- Other pathways:
  - Agriculture Business Management Pathway
  - Photography Pathway
  - Business Pathway
  - Education Pathway
  - Industrial Technology: Architecture and Engineering Pathway
  - Industrial Technology: Welding Pathway
  - Public Health Pathway

# From the Perspective of an Early College Instructor

- Asked myself, what was I glad the professors did when I was in college?
- Location, location, location
  - Access, access, access (1-to-1)
- Passion for learning
  - Why are students taking “*this*” class?
- Best Practices:
  - Voice and Choice
  - Complete Course Planning
  - Online Access (Canvas/Google Classroom)
  - Open Source Material (Openstax)
- Transitions:
  - Online Lectures (Loom)
  - Office Hours (Zoom)



openstax™



# From the Perspective of an Early College Student

- McFarland Early College Junior
- Resident of McFarland
- Past dual enrollment courses
  - Success 101
- Dual enrollment courses I plan on taking
  - English B1A & English B1B
- Hope to major in computer science in university



# From the Perspective of an Early College Student

- Prior dual enrollment courses
  - Success 101 (BC Course: Student Development STDV B3- “Career and Life Planning”)
- Future dual enrollment courses
  - English B1A & English B1B
- Why I took this course:
  - Challenge myself academically
  - Expose myself to college-level material
  - Gain college credit
- This course has helped me:
  - Learn to pace myself in order to complete school work
  - Strengthen my writing and researching skills
  - Broaden my perspective on the world in general
  - Prepare myself for the next level of my education

# From the Perspective of an Early College Student

- Online Learning
  - All work done online, through Google Classroom and Canvas
  - Big change for me, completely changed how I approach my schooling
    - Much more important to work independently and use online resources
  - Online lectures replace real life ones, now the main source of learning
    - Overall, all my teachers have done phenomenal job at adapting to change and catering to us students
  - Workload overall has remained the same, if not less
- Course has taught me how to manage heavy workloads and effectively research for different topics



# Q&A



**Nicole Alvarez**  
Early College Program  
Manager  
Bakersfield College



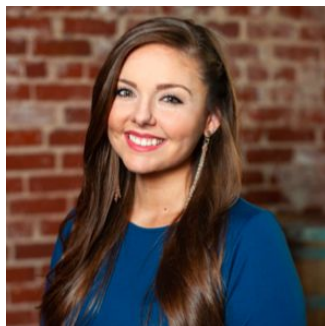
**Cynthia Zamora**  
Early College Counselor  
Bakersfield College



**Christopher Pelletier**  
Dual Enrollment Instructor  
McFarland High School Early  
College



**Joshua Rizo**  
Early College Student  
McFarland High School Early  
College



**Lesley Bonds**  
Director of Student Success & Equity  
Bakersfield College



**Kylie Swanson**  
Early College Professional Expert  
Bakersfield College

*Write your questions in the chat box and we will read them aloud*

# Questions?

# The Virtual Campus: Retaining Sense of Belonging Amidst COVID-19 Transitions

Office of Intersegmental  
Partnerships



Chaffey College

# Transitions Webinar Presenter

The Virtual Campus:  
Retaining Sense of Belonging  
Amidst COVID-19 Transitions



Chaffey College

# The Chaffey College Team

**Matthew Morin**

Director  
Intersegmental Partnerships

**Melissa Sakoonphong**

Counselor  
Guided Pathways Faculty  
Lead

**Rose Ann Osmanian**

Coordinator  
Success Centers & SI

**Selene Pineda**

Reference Librarian & Distance  
Education Co-Facilitator



**Chaffey College**

# January's vision...

...a focus on entering and  
staying on the path

# CREATING A SENSE OF BELONGING

JANUARY 9-10, 2020



# COVID-19 Guided Pathways Risk Assessment

Entering and staying on the path: the domain of **Student Support**



## Four Pillars of Guided Pathways



Create clear curricular pathways to employment and further education.



Help students choose and enter their pathway.



Help students stay on their path.



Ensure that learning is happening with intentional outcomes.





Ensure that learning is happening with intentional outcomes.

Instruction is an incomplete measure of successful transition



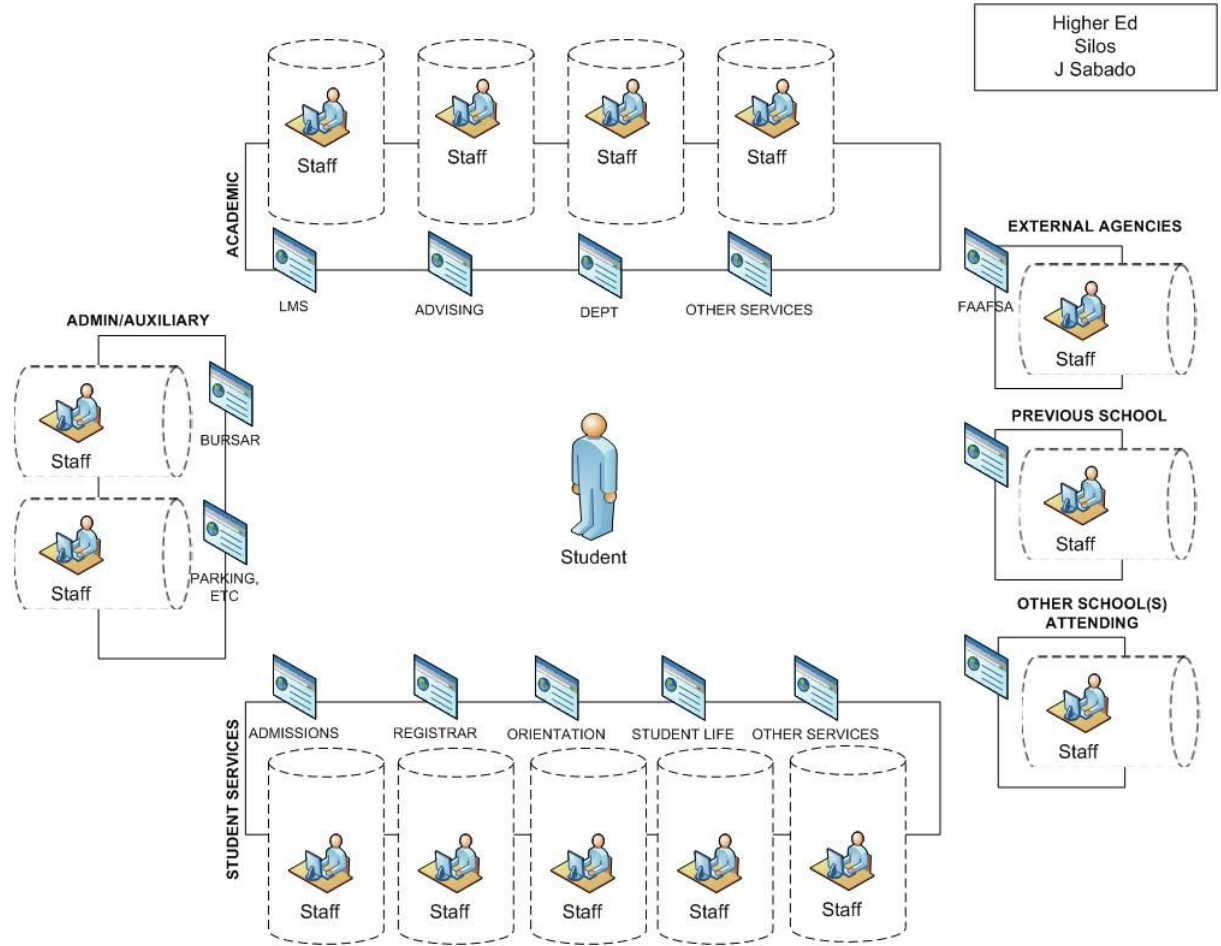
	MON 23	TUE 24	WED 25	THU 26	FRI 27
	Drop-In Lab via ZOOM 8am, ZOOM	Drop-In Lab 8am, ZOOM	OER Develo 8am, ZOOM	Drop-In Lab: Accessi 8am, ZOOM	Drop-In Lab via ZOOM 8am, ZOOM
	BEGINN OER Develop TRAINING: 9am, Z eachin, Using Canvas Essentials	BEGINN OER Develop TRAINING: 9am, Z eachin, Using Canvas Essentials	BEGINN OER Develop TRAINING: 9am, Z eachin, Using Canvas Essentials	Drop-In L 9:30am, CCC: Webi 10am, Webi 10am	Drop-In Lab: 9:30am, Webina 10am, Faculty 10am, ZOOM
	Drop-In Lab via ZOOM 11am, ZOOM	Drop-In Lab 11am, ZOOM	Drop-In Lab 11am, ZOOM	Drop-In Lab: Uploading 11am, ZOOM	Unavailable 11am - 12
	Drop-In Lab 12:30pm, Z	Drop-In Lab 12:30pm, Z	Drop-In Lab 12:30pm, Z	Drop-In L 12:30pm, Z	Capt This! 12 - 12pm
		Drop-In Lab 12:30pm, Z	Drop-In Lab 12:30pm, Z	Drop-In L 12:30pm, Z	CVC: OER Deve 12pm - 12:30pm
		Webin: Keep 1 - 2:3 ZOOM	Drop-In 1pm, Z	Unava ble 1 - 3	Drop 12:30pm
			OER Developer Webinar: 2pm, ZOOM	BEGIN R TRAINING: 2 - 4pm	Unava ble 1 - 3
				ConferZoom Playroom 2 - 4pm	OER Deve 1pm, ZOOM
					(FSC) One- 1 - 3pm ZOOM
BEGINN OER Develop TRAINING: 6pm, ZOOM	Drop-In Lab 6pm, ZOOM	BEGINN OER Develop TRAINING: 6pm, ZOOM	Drop-In Lab 6pm, ZOOM	BEGINN OER Develop TRAINING: 6pm, ZOOM	Drop-In Lab 6pm, ZOOM
Drop-In Lab via ZOOM 7pm, ZOOM	Drop-In Lab via ZOOM 7pm, ZOOM	Drop-In Lab via ZOOM 7pm, ZOOM	Drop-In Lab: Basic Can 7pm, ZOOM	Drop-In Lab via ZOOM 7pm, ZOOM	
ZOOM	ZOOM	ZOOM	ZOOM	ZOOM	
					Hours v

Remote instruction faculty training schedule the week before the full scale online transition

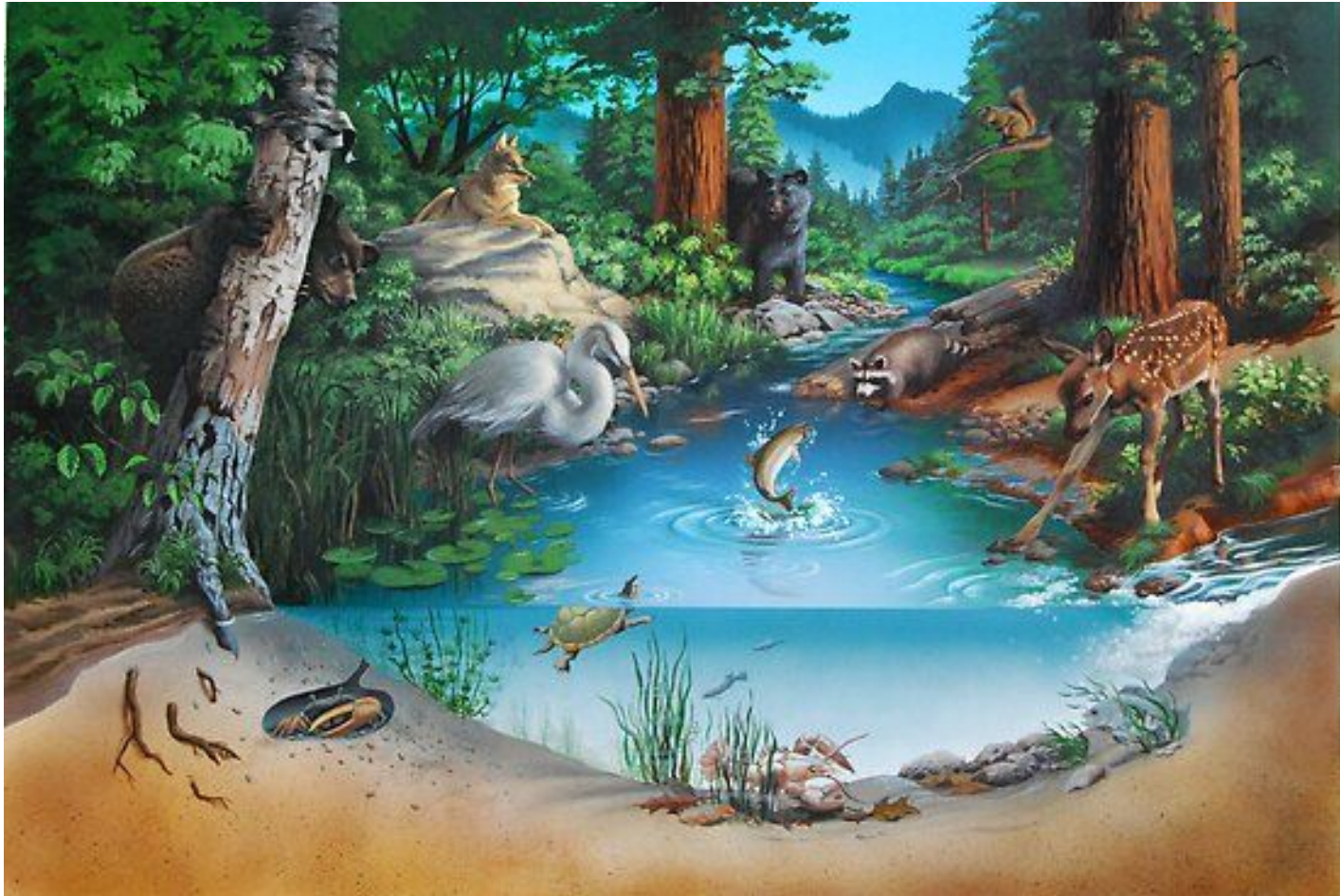




Disaggregated  
campus services  
pose challenges  
to digital  
conversion



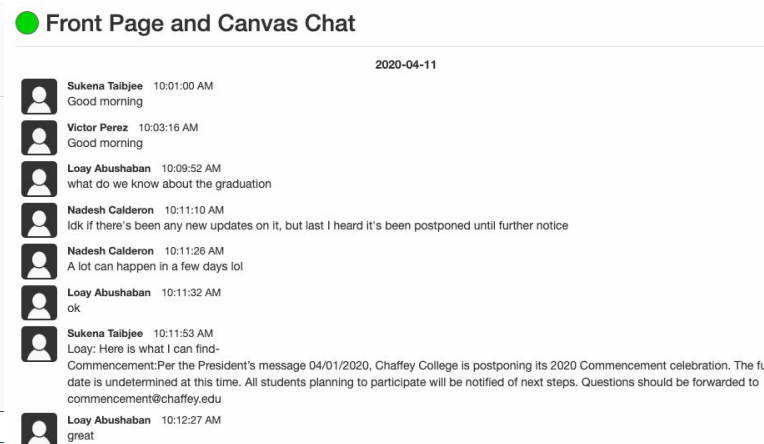
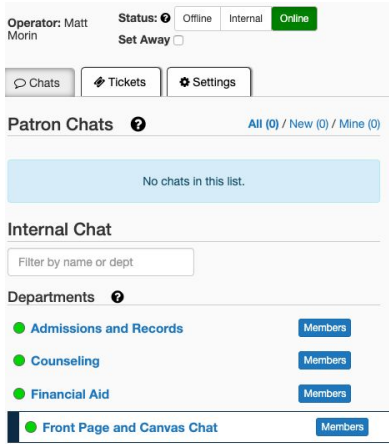
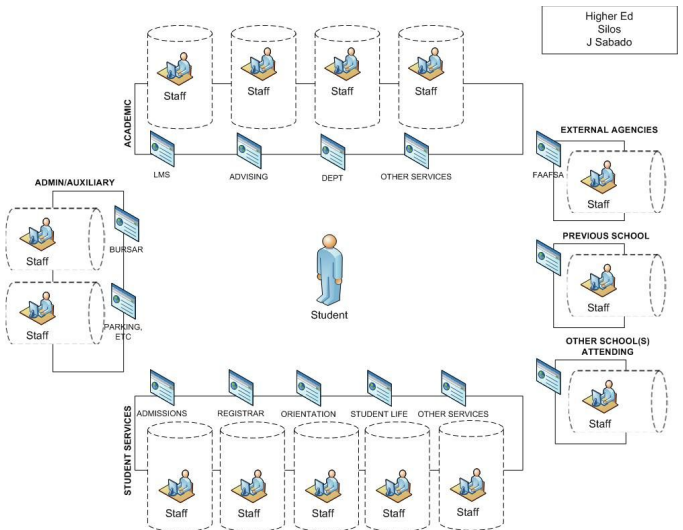
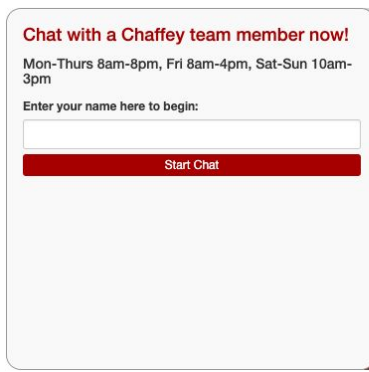
# From Siloed Structures to Ecosystems



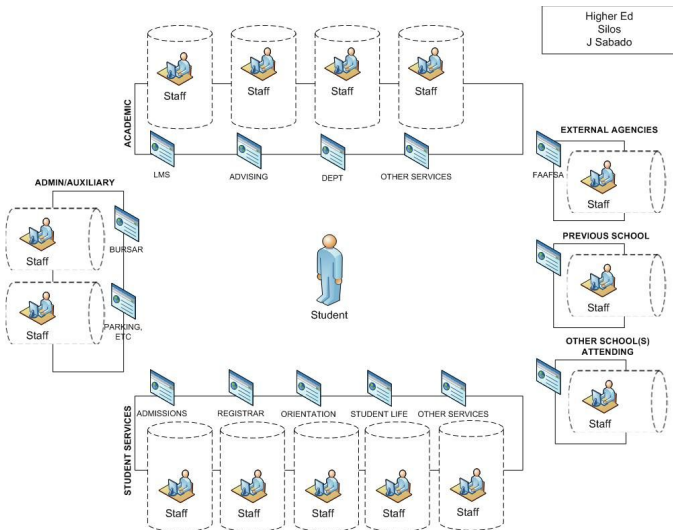
# A Digital Hub as a Campus Ecosystem



# The Digital Doorway: relational power in a live chat box and systems check



# The Digital Doorway: relational power in a live chat box and systems check



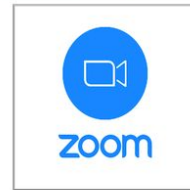
Take your first steps to **Online Learning at Chaffey College!**  
Use the Chaffey online toolkit to help you with the transition.  
We are here to help you succeed!!

## Step 1: Visit the [Canvas Look Around Course](#).



Click the Canvas image on your left to go to the Canvas Look Around Course and familiarize yourself with Canvas. For Canvas technical issues, such as logging in to see your courses, please call 1-833-286-2860.

## Step 2: Test your audio and video capabilities with Zoom!



Click the Zoom image on the left to test your audio and video.

## Step 3: Test your audio and video capabilities with Cranium Cafe!



Click the Cranium Cafe image on the left to test your audio and video.

# The digital counter: Repurposing the queue and the virtual open office space

Welcome to Chaffey College Admissions and Records



Admissions & Records and the Financial Aid Office are available to serve you online. [Join our Virtual Line](#) and someone will be with you shortly.



Text Message  
Today 10:44 AM

You are now in the Virtual Admissions & Records virtual line! We'll text you with updates about your virtual meeting.

Android or iOS? Try our QLess app to see your wait in real time, control when you get served & find more places with no lines - <http://tiny.qless.com/mobileApp>

You're next! Please join the virtual meeting <https://cccconfer.zoom.us/j/884517489> or phone [1-669-900-6833](tel:1-669-900-6833) and enter meeting Id# 884-517-489.

# Online Library Services in Student Support Hub

**ONLINE LIBRARY**

Find books here... **Search**

**Chat with a Librarian 24/7**

?

E-mail address

Your Question/Message

An email address is required before your chat session begins

**Send**

**Visit the Library**  
Library online hours.

**Meet with a Librarian**  
Online office hours using text or video chat.

**Online Workshops**  
Improve your research skills by taking a workshop.

**FAQs**  
Review our most common questions.

**Start Your Research**  
Learn how to pick a topic & get started finding information.

**Access Articles & Databases**  
Full list of Library Databases with thousands of articles.

**Cite Your Sources**  
Learn how to cite in MLA, APA, or Chicago styles.

**Research Guides**  
Check out course and subject guides for pro tips.

## Tools:

- Canvas
- Cranium Cafe
- Zoom
- LibGuides
- LibChat
- QuestionPoint
- LibWizard
- LibAnalytics
- Email

# Cranium Café Card

## Library



Offline

William Araiza

Reference Librarian

Office: Chaffey College Chino Campus CHMB -144



SEND OFFLINE MESSAGE



SCHEDULE MEETING



Online

Ask Me!

Selene Pineda

Librarian & Distance Education Co-Facilitator

Hablo Español

selene.pineda@chaffey.edu

[click to read bio](#)

**STUDENTS:** Have questions about research? Let me assist you. Find more research help at [www.chaffey.edu/library](http://www.chaffey.edu/library)

**FACULTY:** Need DE support? Ask me. Find more DE support by visiting the Distance Education Hub in Canvas.



SEND OFFLINE MESSAGE



SCHEDULE MEETING



Offline

Mellanie Reeve

Reference Librarian

Hours available: Mondays 10:00am-6:00pm

Mellanie.Reeve@chaffey.edu



Offline

Terezita Overduin

Reference Librarian

terezita.overduin@chaffey.edu

Office: Rancho Library



# Embedded Librarian in Canvas Courses



Assessments

## Discussion Topics:

- Meet Poe
- Picking a Topic
- Database Access & Search Tips
- Scholarly vs Popular Resources
- Citing Help & Avoiding Plagiarism
- Web Search & Evaluation
- Fake News
- Career Resources
- Research Reminders


Accessibility Matters



## Picking A Topic Tutorial

Hello!

Welcome, I'm Poe, your virtual Panther Librarian!



I'm here today to help you with Picking a Topic. Have you ever been given an assignment where you get to choose the topic? I know I have, and sometimes that can be an overwhelming process! Here are a few time-saving tips to help you get started with your assignment.

[Begin](#)

*Have a question? Write it in the chat.  
Ex: CHAFFEY how do you....*

# Instructional Support

## Student Support Hub



Chat with a Chaffey team member now! Mon-Thur 8am-8pm, Fri 10am-4pm, Sat-Sun 10am-3pm

Enter your name here to begin:

Start Chat

Admissions and Records and the Financial Aid Office are available to serve you online. [Join our Virtual Line](#) »



### Online Library Services

Connect to great campus library sources, wherever you are.



### Success Center Hub -

#### Online Tutoring and Workshops

Get help with your classes even when you can't go to an on-campus Success Center.



### Community Advising

Meet with a faculty member who can guide your exploration of academic and career pathways.



### Online Counseling

Counselors help you identify your educational goals, create plans, and stay on track to completion.



### Wellness Central

This is a free health and wellness resource created especially for California Community College students.



### Career and Transfer

Center Hub  
Access career pathway information, including the Career Center and CTE counseling.

Success Centers/Supplemental Instruction > Pages > English, Reading & Writing

Online Instructional Support

View All Pages

Home

Pages

SmarterThinking Online Tutoring

ConferZoom

## English, Reading & Writing

[WELCOME](#)

[TUTORING](#)

[DIRECTED LEARNING ACTIVITIES \(DLAs\)](#)

[WORKSHOPS & LEARNING GROUPS](#)

[APPOINTMENTS & WALK-INS](#)

[TECHNOLOGY REQUIREMENTS](#)



Welcome!

Do you have questions about your English course or general questions about reading and writing?

If so, you may want to meet with one of our tutors in a video-conference.

To do that, try a virtual [walk-in session](#) ». You will be able to make advanced appointments again, soon, so please check back for more information about that. For more information about advanced appointments and walk-in sessions, click on the Appointments and Walk-Ins tab above.

Have a question? Write it in the chat..

Ex: CHAFFEY how do you....

# Synchronous Support

Breakout Rooms - In Progress

- Unassigned 3
  - Intake - Cassandra Assign To
  - martha sabroso Assign To
  - Tutor-Fasilat Assign To
- Workshop Join
- Tutor Alison Join
- Tutor Devion Join
- Tutor Angel
  - Angel Ku
- Tutor Eliita
- Tutor Parveena
  - English Tutor - Parveena Singh
- Tutor Erick
  - Tutor Erick
- Tutor Nadesh

Broadcast a message to all Close A

Apr. 18: Saturday	8:00am	9:00am	10:00am	11:00am	12:00pm	1:00pm	2:00pm
Devion (Eng & ScSci/CSC) <span>✎</span>							
Gina (English/Online) <span>✎</span>							
Nadesh (English/Online) <span>✎</span>							
Victor (Eng/CSC) <span>✎</span>							

Participants in chat:

- Rose Ann Osmanlian (Host, me)
- Marcela Jones (Co-host)
- Intake - Cassandra
- martha sabroso
- Tutor-Fasilat

Meeting controls: Invite, Mute All, Unmute All, End Meeting

# Reporting Data

## Online English Success Center Sign-In

Student Name: (required)

7-Digit Student ID number, no initials: (required)

Chaffey Email Address: (required)

Course subject: (required)

Activity: (required)

Do you have an advanced appointment made through WConline, or are you walking in without an appointment? (required)

- Appointment  
 Walk-in

Will your instructor need verification of this activity? (required)

- Yes (be sure that the tutor or faculty person is aware)  
 No



## Online English, Reading, & Writing Tutor Slip

Date and Time at Start of Session (required)






Student's First Name: (required)

Student's Last Name: (required)

Student ID number without initials: (required)

Class: (required)

Student's reason for tutoring today (please check all that apply): (required)

- To discuss the assignment expectations  
 To discuss instructor's comments on essay  
 To brainstorm ideas for the essay  
 To discuss development of ideas  
 To increase critical reading comprehension  
 Other

Prior to tutoring, what did the student attempt to do? Please check all that apply. (required)

- Read the description of their assignment  
 Communicated with their instructor  
 Read their class notes  
 Used online resources  
 Wrote a rough draft  
 Other  
 Communicated with their PAL

What did the student bring with them? Please check all that apply. (required)

- Notes from class  
 Graded essay  
 Book  
 Nothing (specify what you will bring to future tutoring):  
 Rough draft or outline

Based on what you and student discussed, what next steps will the student take? (required)

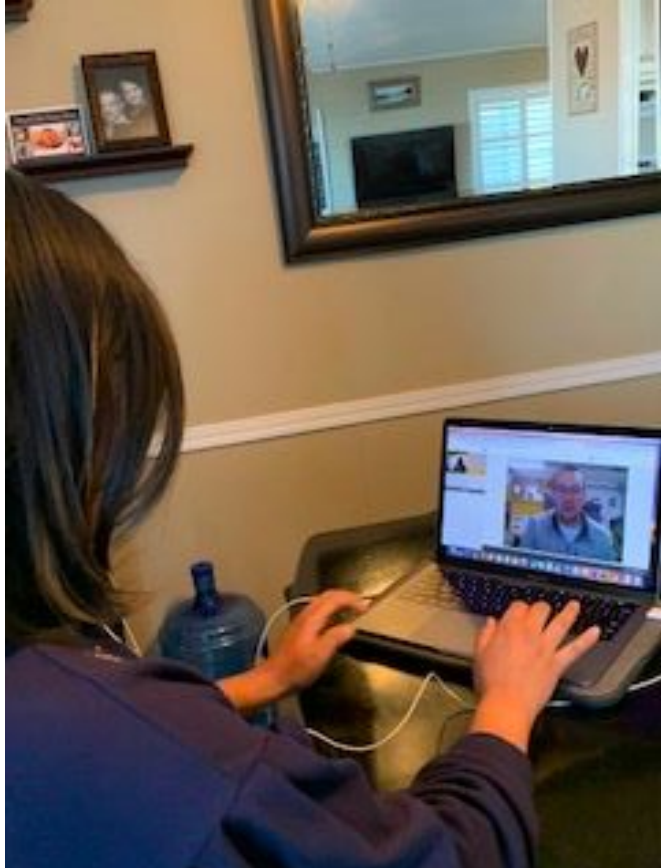
Date and Time at End of Session (required)






Nadesh	03/23/2020 06:55:46 PM	03/23/2020 08:16:16 PM	81
Eliita	03/23/2020 06:55:46 PM	03/23/2020 08:14:30 PM	79
Taylor	03/23/2020 06:55:47 PM	03/23/2020 08:09:15 PM	74

# On-demand virtual counseling meetings



## Schedule a Meeting with General Counseling

### SELECT A MEETING DATE

<< Last Week

Sunday  
Apr 12

Monday  
Apr 13

Tuesday  
Apr 14

Wednesday  
Apr 15

Thursday  
Apr 16

Friday  
Apr 17

Saturday  
Apr 18

Next Week >>

### SELECT A REASON FOR MEETING

Abbreviated Educational Plan  
(45 minute meeting)

Academic Renewal  
(45 minute meeting)

Comprehensive Educational Plan  
(45 minute meeting)

Counseling  
(45 minute meeting)

CSU GE & IGETC Certification  
(45 minute meeting)

Follow-Up  
(45 minute meeting)

Graduation Check  
(45 minute meeting)

Preliminary Graduation Check  
(45 minute meeting)

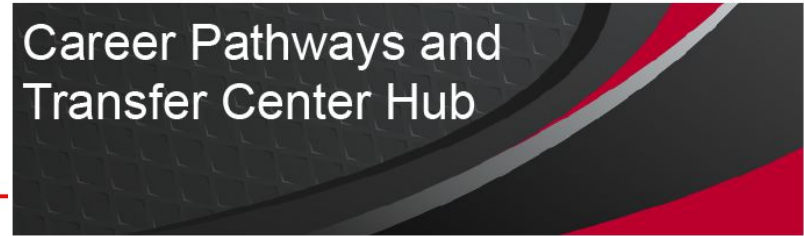
PUENTE  
(45 minute meeting)

PUENTE Walk-In  
(15 minute meeting)

Transfer Counseling  
(45 minute meeting)

Unit Overload  
(45 minute meeting)

# Career Pathways and Transfer Center Hub



## Career Pathways and Transfer Center Hub

Chaffey College Career Pathways and Transfer Center Hub provides experiential learning, career exploration, transfer guidance, and overall success. Students have the opportunity to develop skill necessary to be successful in the workplace and prepare for transferring to a university or college, while pursuing their personal aspirations and growth.

## Transfer Center Hub

The Chaffey College [Transfer Center](#) is here to help you transfer to your desired four-year University or College!

[Schedule an appointment with the Transfer Center](#)

[Chat with the Transfer Center now](#)

### [ASSIST](#)



ASSIST will help you Explore Majors, review Course Articulation Agreements between Chaffey College and the CSU-UC system, as well as what mandatory Major Preparation Courses are necessary in order to transfer.

[Learn more about ASSIST](#)

### [APPLY TO CALIFORNIA STATE UNIVERSITY \(CSU\)](#)



The CSU system is made up of 23 campuses across the state of California. Cal State Apply is the new way to apply to CSU! Explore campuses and plan for transfer to the CSU system. Apply as an Undergraduate Transfer Student to the CSU campus of your choice.

[Apply to CSU](#)

### [APPLY TO THE UNIVERSITY OF CALIFORNIA](#)



Apply on-line or access general UC campus and admissions information. University of California

[Apply to UC](#)

### [ASSOCIATES DEGREE TO TRANSFER](#)



The California Community Colleges and partnering institutions created this transfer program to make it easier for students like you to start at a community college, transfer to a guaranteed saved spot at a participating four-year university and earn your

[Learn more about the ADT Program](#)

### [Transfer Center Hub](#)



Access a variety of helpful services and resources to help you navigate the transfer process.

### [Career Center Hub](#)



Access vital Career Center services: Career Counseling, Resume Review, Employment Assistance, and Career Assessments; online to support your career development

### [CTE Programs](#)



Find out about the various Career Technical Education programs at Chaffey College

### [Chaffey College Student Support Services Hub](#)



Access other Chaffey online student support services including library, tutoring, and the student help desk.

### [InTECH Center](#)



Learn more about the programs

# Resource needs and scaled hardware loan

**DB** Chaffey College lending 5,000 laptops to...



LOCAL NEWS

## Chaffey College lending 5,000 laptops to students amid coronavirus outbreak

The community college is switching to online learning





## **DE Certification for Student Support Areas**

(Counseling, Instructional Support & Library)

- What does that look like?
- Proficiency standards
  - Technical
  - Pedagogy
- Parallel expectations to instruction
- SLOs



*Write your questions in the chat box and we will read them aloud*

# Questions?

**Friday, May 1st - 10:00 am - 12:00 pm**

**Redesigning with Transitions in Mind:  
A Guided Pathways Webinar**

**Long Beach Partnership  
Rising Scholars, Shasta College, Southwestern College**

*Thank you for joining us today.*

This webinar is part of a series produced by Career Ladders Project with funding from the California Community Colleges Chancellor's Office.

[careerladdersproject.org](https://careerladdersproject.org)