

Moving Student Supports Online: *Classified Staff Challenges to Supporting Students* **Webinar Series**

Wednesday, April 22nd
2 p.m. - 3 p.m.



Technical announcements

- When you join you will be MUTED
- Your video will be OFF upon entry to zoom
- If you are joining by phone and computer/tablet, please connect your phone to your computer/tablet (#participantID#)

If you have a **tech issue** use the following notation:

“TECH I can’t hear.”

Asking questions & sharing ideas

Use the chat function on zoom to type your question.

- If you have a **question for a panelist** indicate the college before your question. ex: *COLLEGE NAME How do you....?*
- If you have a **general question** regarding dual enrollment use the following notation: *GENERAL What are colleges....?*
- If you have an **approach** you'd like to share, let us know in the chat. ex: *"IDEA I (Your name) have an approach to the question regarding...."*

Student Supports Webinar Series team



Luis Chavez
Senior Director



Julian West
Director



Cristina Sandoval
Program Associate



Sherry Shojaei
Program Manager

Welcome to the Moving Student Supports Online webinar!

- The purpose of these webinars and topics we will discuss.
 - Delivering equitable support services
 - Addressing barriers like access, connection and equipment
 - Using online support platforms
 - Offering Professional Development & Professional Learning
 - Keeping focus on student needs and engagement
 - Supporting practitioner exchange and learning

1- hour every Wednesday; video, slides and links will be shared

Webinar participants!

The participants who are joining us today: counseling faculty, student services administrators, classified staff, Instructional faculty (counseling & non-instructional), state policy representatives, researchers, foundation and Chancellor's Office representatives, a few K-12 educators & staff, and student representatives.

Practitioners for today's webinar

“Classified Staff Challenges to Supporting Students”

Sandra Varela, MPA

CalWORKs Director
San Joaquin Delta College



Natalie Halsell, MA

Professional Development
Coordinator
Riverside City College



Grace Beltran

Program Services
Coordinator
Skyline College



Natalie Halsell, MA

Professional Development
Coordinator
Riverside City College



Riverside City College

Demographics

- **30,066 student count**
 - 62% Hispanic
 - 19% White/Non-hispanic
 - 8% African American
 - 5% Asian
 - 2% Pacific Islander
 - 4% Other
- 45 Associate Degree Programs
 - 37 Certificates
 - 8 Instructional Pathways

Riverside City College

Challenge 1

Achieving Work/Life Balance

Ideas:

- Share on a weekly basis useful articles, websites, and other resources
- Establish reasonable expectations and clearly communicate those expectations

Riverside City College

Challenge 2

Maintaining a sense of community

Ideas:

- Begin team meetings with a check-in/small wins
- Water Cooler Wednesdays
- Establish or continue an employee recognition program

Write your questions in the chat box and we will read them aloud

Questions?



Sandra Varela, MPA

CalWORKs Director
San Joaquin Delta
College



San Joaquin Delta College Demographics

- **31,775 student count**
- 47% Hispanic
- 19% White/Non-hispanic
- 13% Asian
- 9% African American
- 5% Filipino
- 6% % Other

Award Information:

- 2,532 AA/AS
- 282 AA-T/AS
- 793 CT
- 3607 Total

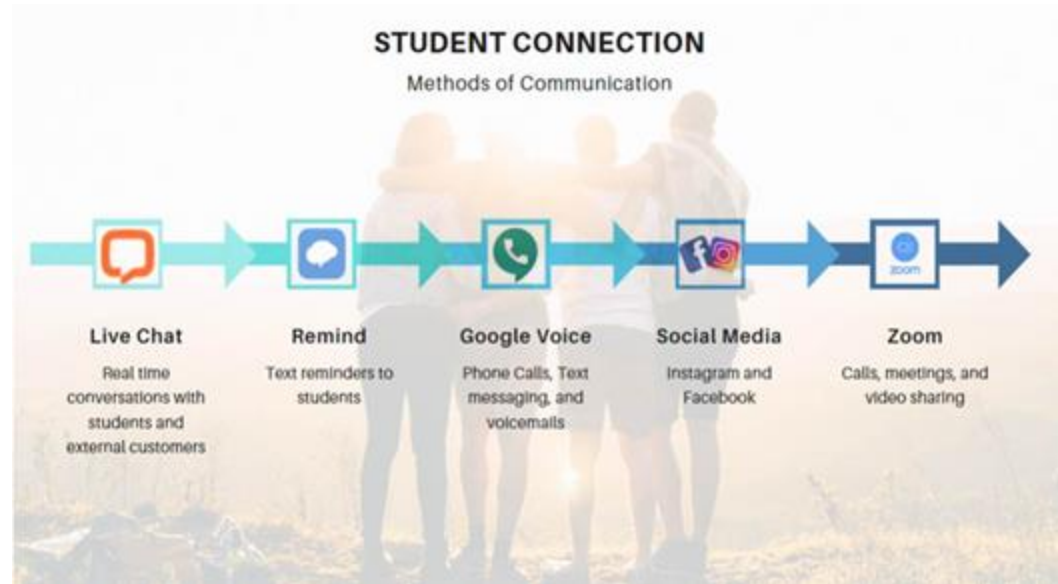
San Joaquin Delta College

Challenge 1

Connecting with Students in a Distance Learning Environment

Idea:

Technology Platforms



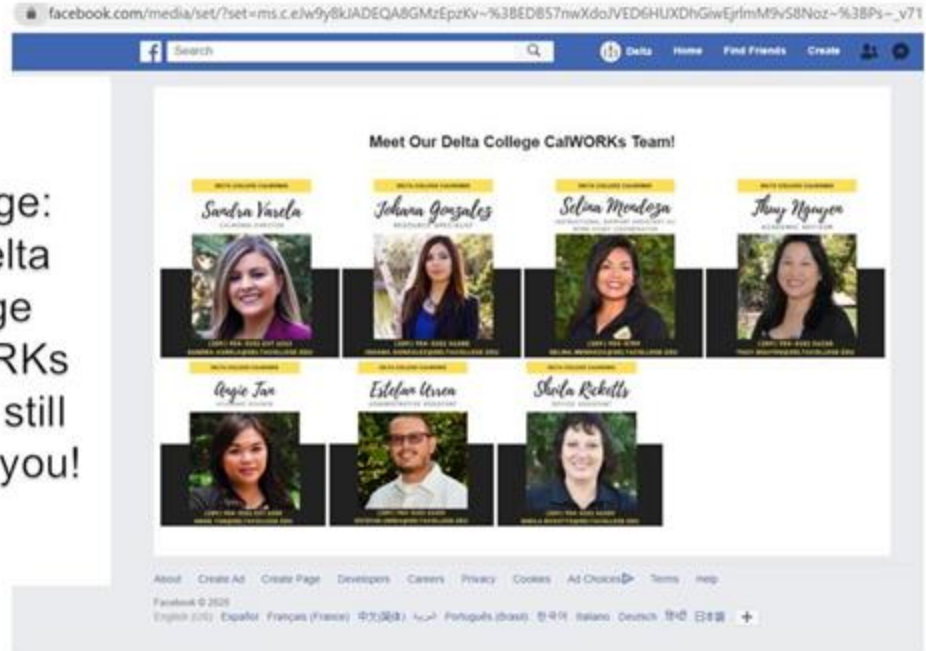
San Joaquin Delta College

Challenge 1 Cont.

**Connecting with
Students in Distance
Learning Environment**

**Idea:
Social Media**

Message:
Our Delta
College
CalWORKs
team is still
here for you!



San Joaquin Delta College

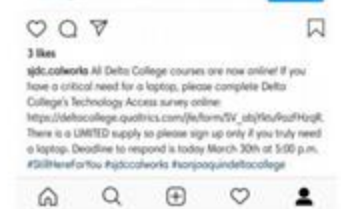
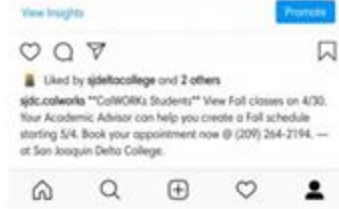
Challenge: Internal Communication

Connecting with
Students in Distance
Learning Environment

Idea:

Social Media

INTERNAL COMMUNICATION



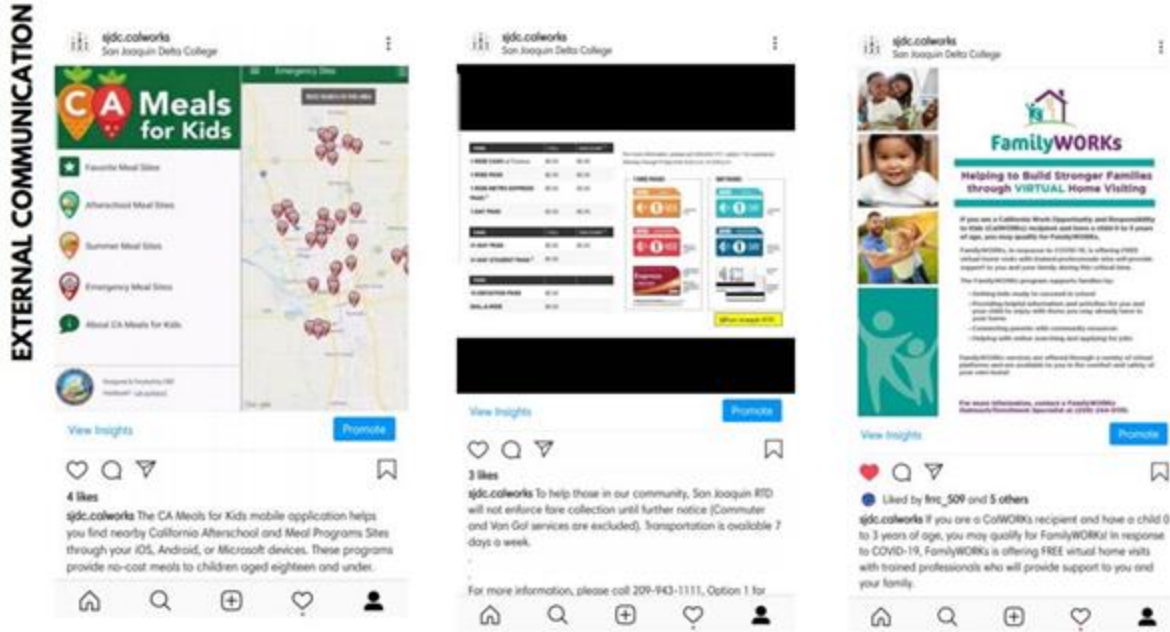
San Joaquin Delta College

Challenge External Communication

Connecting with
Students in Distance
Learning Environment

Idea:

Social Media



Write your questions in the chat box and we will read them aloud

Questions?



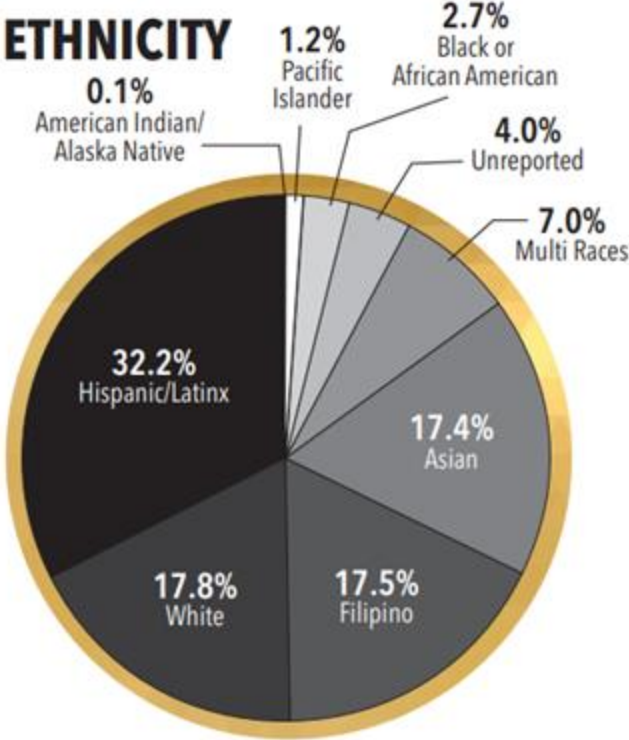
Grace Beltran
Program Services
Coordinator
Skyline College



Skyline College demographics

- Total Credit Students: 8,802
 - 27.7% Full Time
 - 31.0% Half Time
 - 42.0% Less than Half Time

- Curriculum:
 - Associate Degree Programs: 33
 - Associate Degree for Transfer: 28
 - Certificate Programs: 47
 - Bachelor's Degree Program: 1



Have a question? Let us know in the chat box.
Ex: SKYLINE how do you....

Skyline College

Challenge 1: *Preparing for what's next - be Student Ready*

Idea:

- Continuing Student
 - [SWAY](#): an app from Microsoft Office that makes it easy to create and share interactive reports, personal stories, presentations, and more.
 - CANVAS Program Shells
 - Student Survey on their challenges and concerns - plans moving forward if still online
 - Delivery Method: Email and Text
- New College Student
 - Counselor Liaison Program - working with Feeder High School Counselors/Admin
 - Virtual PEP - a one day event turned into a 2 week program

Skyline College Cont.

Challenge 2: Continued Creative and Collaborative Work

Idea:

- Continue to go beyond the basics - be innovative and creative
 - Stay motivated and remember “your why”
- Utilize resources and technology you have access to
 - Switch up your means of communication beyond email
- Send ideas and thoughts to peers and colleagues
 - Even the simplest ideas can go a long way
 - Peers are able to provide you a different perspective

Write your questions in the chat box and we will read them aloud

Questions?

Join our BASECAMP Community of Practice



- Home
- Pings
- Hey!
- Activity
- My Stuff
- Find

Go to the Clientside for Public →



Public

CACN, a community of practice sponsored & facilitated by the Career Ladders Project

The CaCN (California Counseling Network) basecamp group, open to ALL student support services professionals and counselors at high schools and community colleges, serves as a communication and exchange tool in support of student success and equity.



Campfire

- Kerry Compton 1:42pm
Not to my knowledge, but I
- Deidre Hill-Valdivia, Ed.D 1:55pm
Thanks, Kerry.

Message Board

- Student Supports Going Virtual!
- Student Supports Going Virtual!

Docs & Files



Resources

- Platicas
 - An extended conversation based on the questions we could not get to
- CLP curated list of Internet access and online resources for students and colleges
- Chancellor's Office
 - COVID-19 webpage
 - Wednesday Webinar Updates
 - Vision Resource Center

Join us for our last webinar



Wednesday, April 29th from 2 p.m. to 3 p.m.

Focus- Learning Communities Meeting the Equity Challenge

Video, powerpoint and other resources will be emailed to you following today's webinar.

*THANK YOU
for joining us today.*

This webinar is part of a series produced by Career Ladders Project with funding from the California Community Colleges Chancellor's Office.