

CAREER PATHWAYS TRUST

EAST BAY CAREER
PATHWAYS

OCTOBER 2, 2014



College & Career Academy Support Network
UNIVERSITY OF CALIFORNIA • BERKELEY • IRVINE



Evan Decker
Sherry Suisman
Career Ladders Project (CLP)

Katherine Bergman
Gretchen Livesey
Working Group Members

TARGET DISTRICT AND COLLEGES



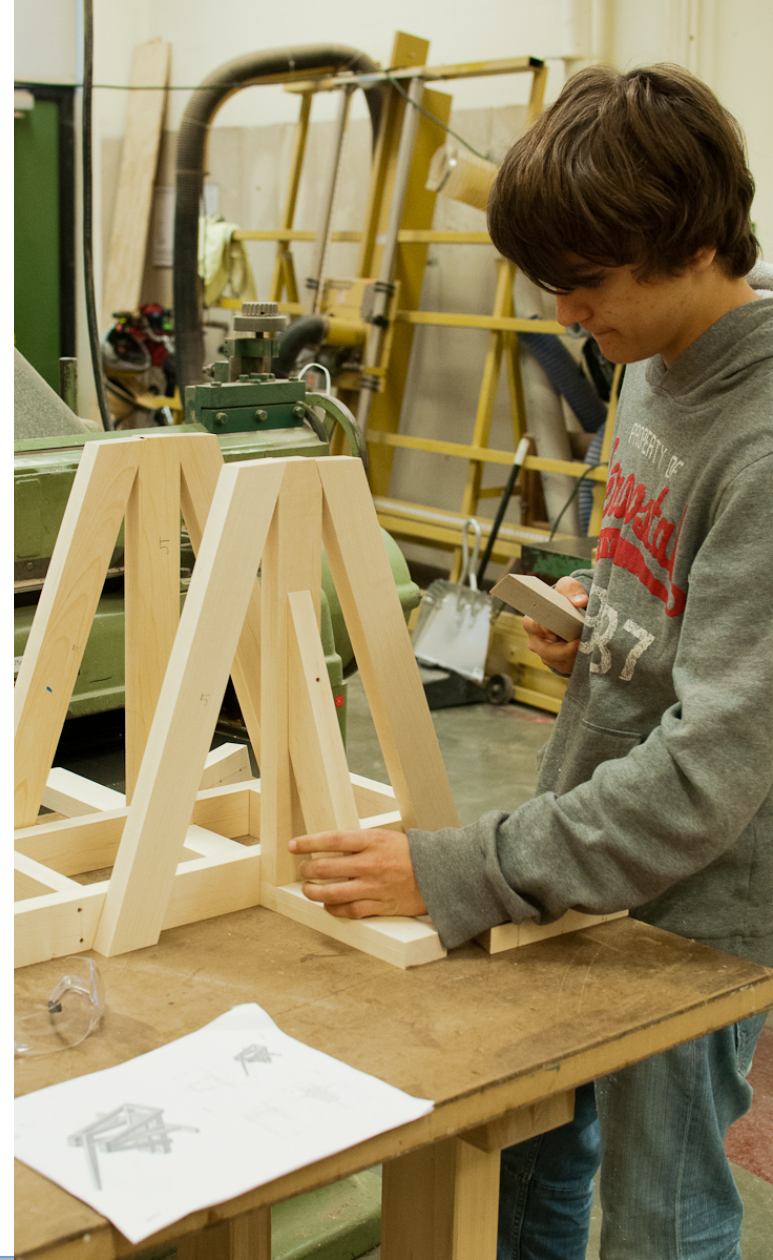
180/1680 Corridor
CPT



CLP and CCASN

Technical Assistance and Professional Development

- **Deliver professional development and training in pathway teams and workshops**
- **Facilitate action planning, help gain buy-in, spur systems reforms**
- **With ACOE direction, inform data and accountability structures and processes**
- **Provide information, research and tools, documentation**
- **Be a resource to CPT i880 leadership/ coordinator and college and k12 leadership**



Student Outcomes

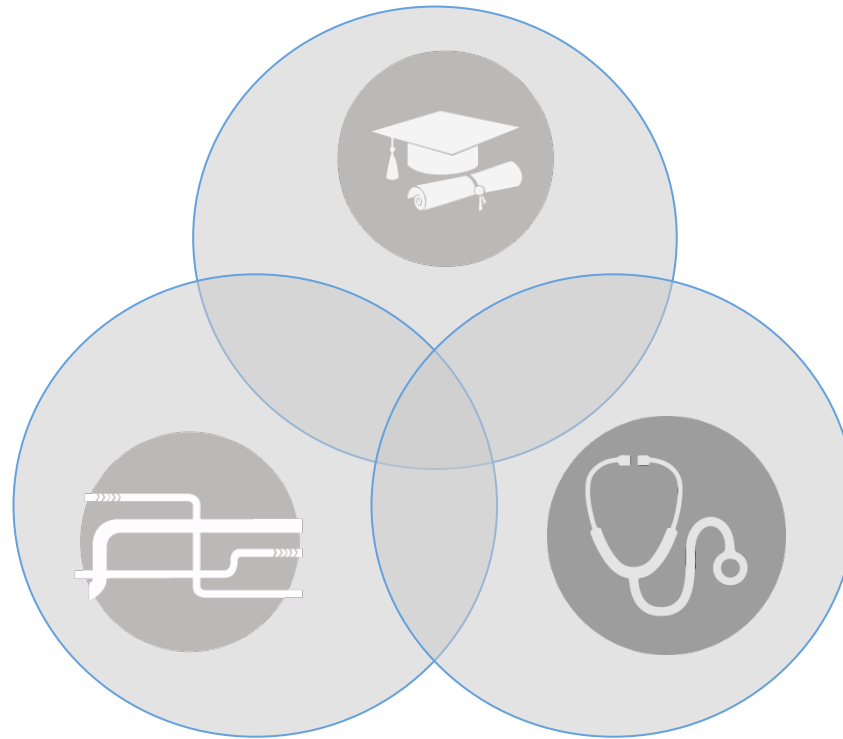
More students:

- Enrolled in pathways
- Enrolled dually or concurrently in high school and college
- Engaged in work-based learning



880 CPT: THREE (INTERCONNECTED) “BUCKETS” OF WORK:

Successful
Transitions



Pathway
Development

Career
Connections

East Bay CPT Consortium Work Timeline – DRAFT 8-26-14

	Aug 2014	Sept	Oct	Nov	Dec	Jan 2015	Feb	Mar	April	May	June 2015
Pathway Devt Teams	Pathways 101 (for District leadership new to pathways)		October 2 AM: Launch PM: Regional Pathway Teams	● ● ● ●	Dec. 4 PM: Regional Pathway Teams	● ● ● ●	Feb. 5 PM: Regional Pathway Teams	● ● ● ●	● ● ● ●	May 7 AM: 680/880 PM: Regional Pathway Teams	
Transition Teams				□ □ □	AM: Regional Transition Teams	□ □ □	AM: Regional Transition Teams	□ □ □	□ □ □		
Career Connections			WBL Forum?								
Data Sharing		Data Forum									

Local Transition Work:

Student Supports

Placement/ Remediation

Dual Enrollment

Local Pathway Work:

●
Eng/Manuf

●
ICT/DM

●
Health Science

●
Public Service



Promising Practices

Mark Frey

Skyline High School

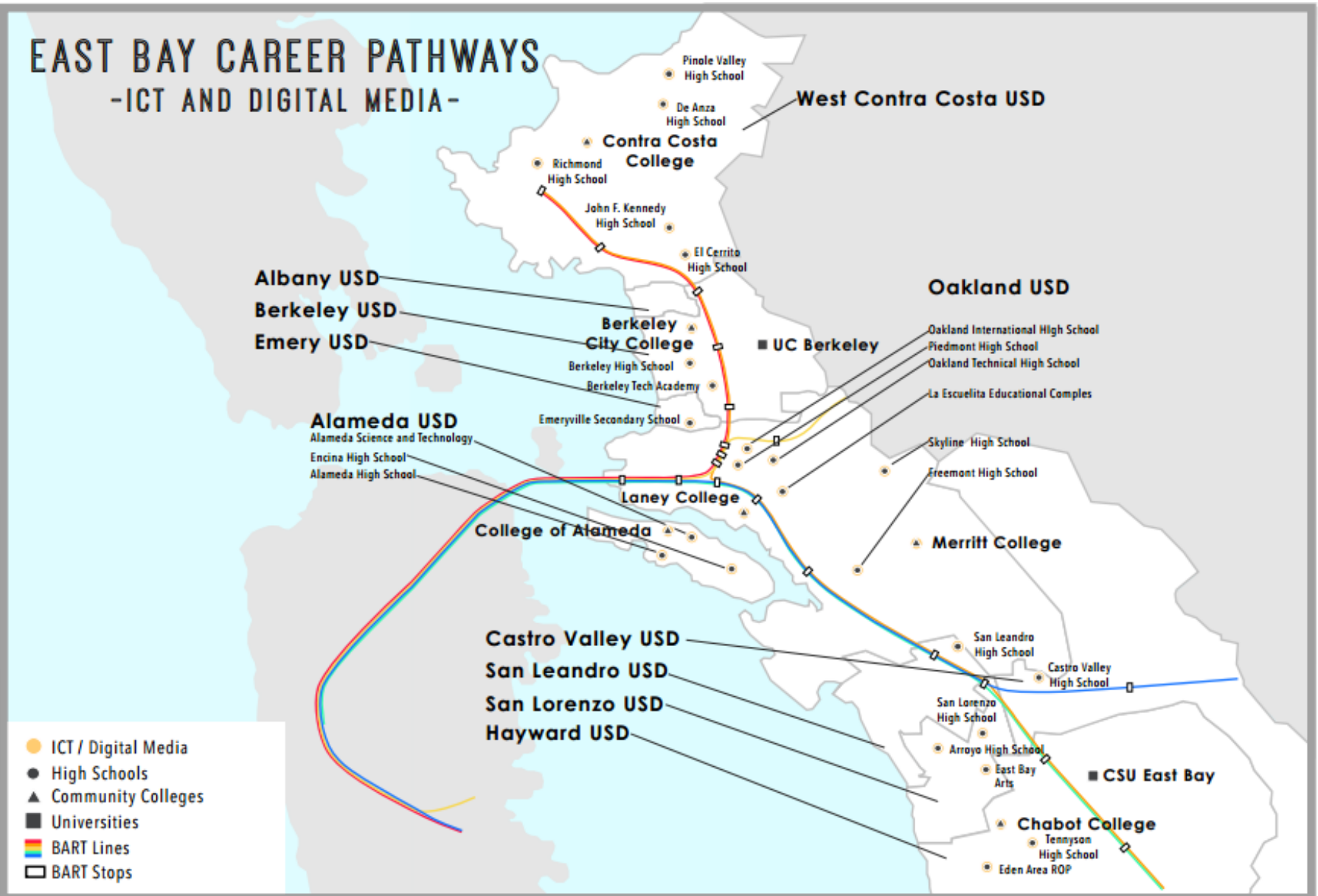
Maeve Katherine Bergman

Director of Special Projects and Career
Technical Education
Berkeley City College



EAST BAY CAREER PATHWAYS

-ICT AND DIGITAL MEDIA-



ICT/Digital Media Pathways Inventory

Please send inventory edits and corrections to:

Rebecca Lacocque

rlecocque@peralta.edu

Kristina Palmer

kpalmer@CareerLaddersProject.org



YEAR ONE

Colleges and high schools *locally*:

- Deepen K12-college connections
- Get more students enrolled by starting/expanding college and career *pathways*
- Improve pathway quality by:
 - Aligning K-12/college curricula
 - Increasing and integrating work-based learning and credit-based internships
 - Transitioning more students to college
 - Enroll students early (dually/concurrently)
 - Better remediation, improved academic placement
 - Improve matriculation, outreach, exposure



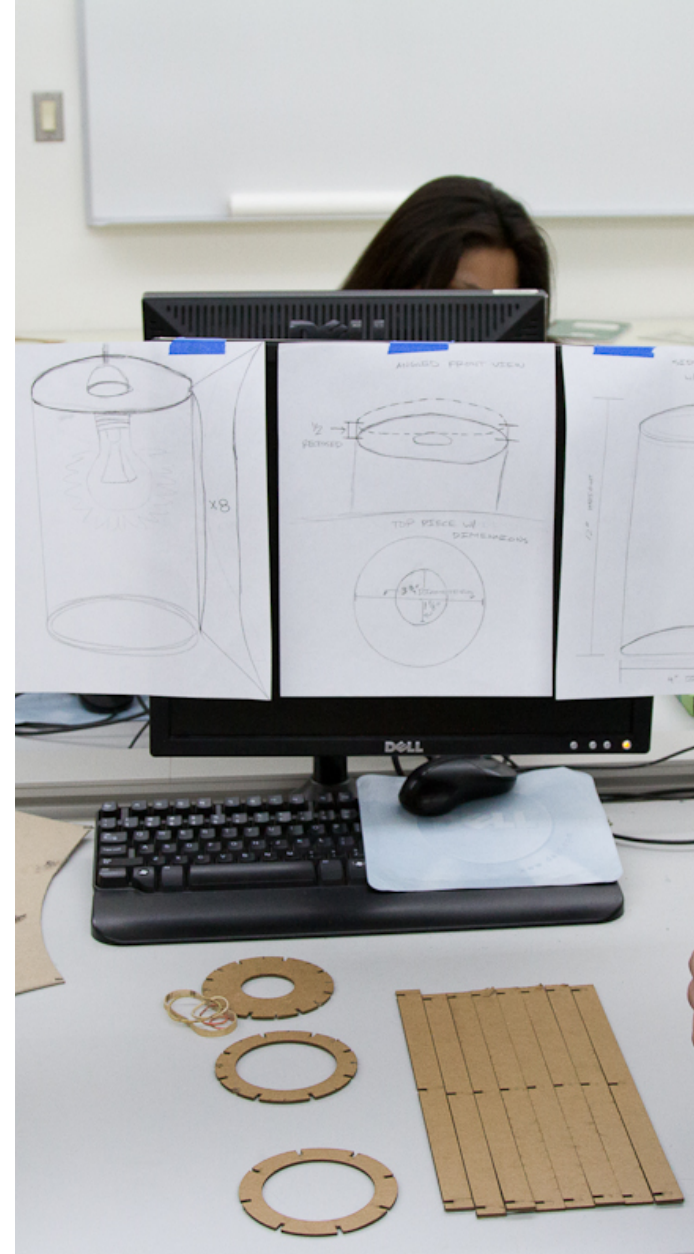
YEAR ONE

Colleges and high schools *regionally*:

- Learn practices from peers, experts and local teams to begin, improve, expand pathways
- Hear and respond to industry needs
- Inventory and action planning
- Move progressively towards taking action on issues to be addressed regionally (and/or sub-regionally/locally)
- Learning Communities

Online Evaluation

<https://www.surveymonkey.com/s/CPT-EB-1>



FOR MORE INFORMATION:



CLP


College & Career Academy Support Network
UNIVERSITY OF CALIFORNIA • BERKELEY • IRVINE



FOR MORE INFORMATION:

Sherry Suisman

ssuisman@CareerLaddersProject.org

Evan Decker

Evan.j.decker@gmail.com



CLP

CASN
College & Career Academy Support Network
UNIVERSITY OF CALIFORNIA • BERKELEY • IRVINE



End of Presentation

- Slides that follow this one can be used if needed but are not included in the presentation



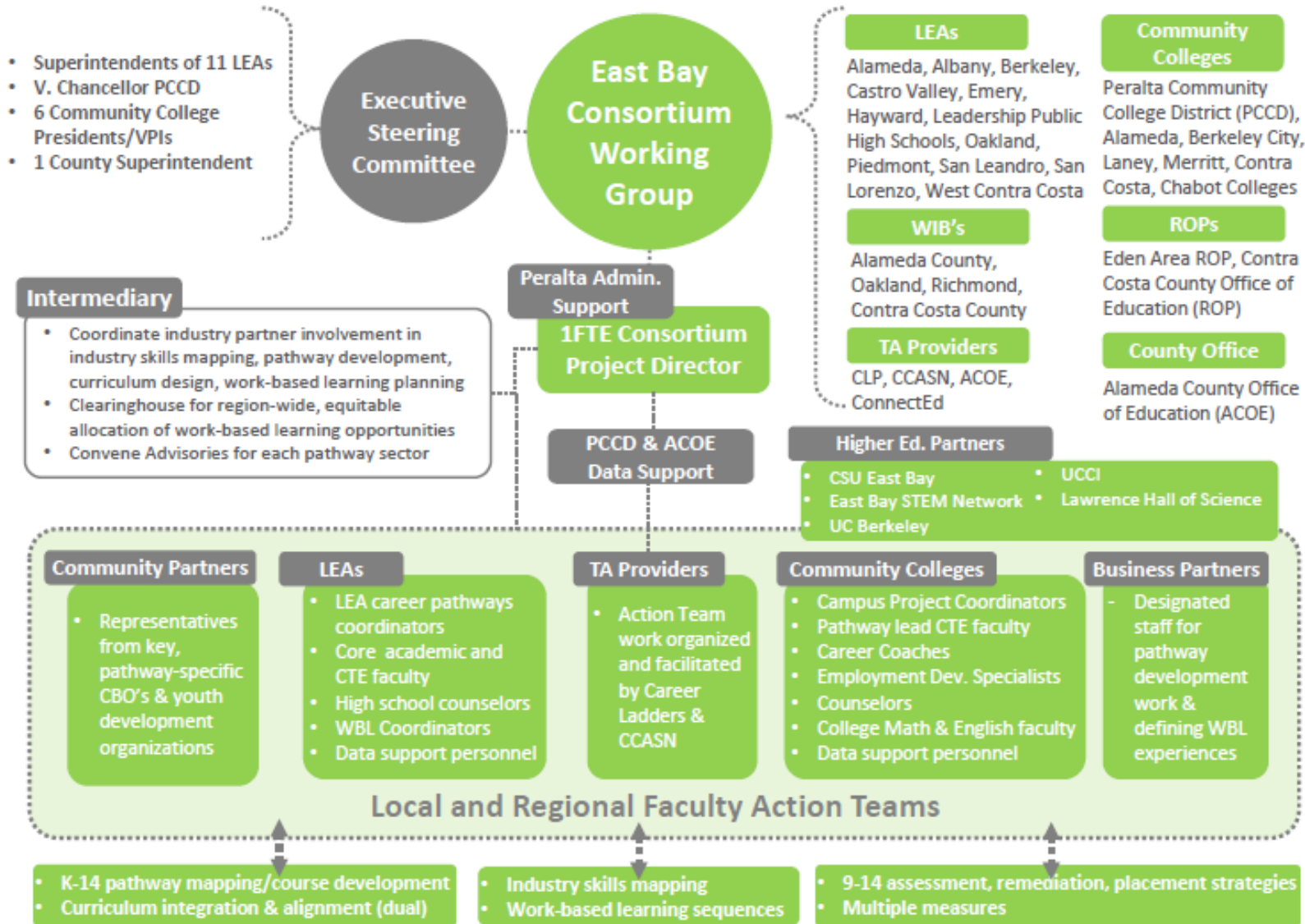
COMMUNITY COLLEGE	INDUSTRY CERTIFICATION	B.A. Transfer		JOB & WAGES	advanced	
	Certified Medical Assistant National Council Licensure for Registered Nursing	Registered Nursing, AS	Medical Assistant, AS	Advanced Level Employment • Registered Nurse: \$35-\$54/hr • Medical Assistant: \$21-\$50/hr		
	Certificate					
	Paramedics (private programs)	General Education	Medical Assistant Certificate of Achievement, 38 units	Intermediate Level Employment • Medical Assistant: \$12-\$25/hr • Medical Billing and Coding: \$12-\$25/hr		
Certificate of Achievement					entry	
Emergency Medical Technician: Office of Emergency Services	Emergency Medical Services, 12.5 units (Youth) Summer Bridge, 5 units	Entry Level Employment • Emergency Medical Technician: \$10-\$29/ hr				

Transition

HIGH SCHOOLS	INDUSTRY CERTIFICATION	DEANZA HEALTH ACADEMY			PINOLE VALLEY HEALTH ACADEMY			RICHMOND HEALTH ACADEMY			
		Instruction	WBL	Matriculation	Instruction	WBL	Matriculation	Instruction	WBL	Matriculation	
	Concussion Certification	Intro to Hospital Svcs. English 1A DE: Psych 103A, CNA, Health Careers, BioTech I & II	Stanford Med School Visits? CNA Nursing Home Internship	CCC Application & Early Assessment CCC Faculty visits		CNA Nursing Home Internship	CCC Application & Early Assessment CCC Faculty visits	Psych 103A BioSci 172 Medic 100	Concussion Certification	CCC Application & Early Assessment CCC Faculty visits	12
		Biotechnology English 1A DE: Psych 103A, CNA, Health Careers, BioTech I & II	STEM Summer Camps Dentistry Internship	CCC Career Days CCC Faculty visits		STEM Summer Camps	CCC Faculty visits CCC Career Days	Psych 103A BioSci 172 Medic 100	STEM Summer Camps	CCC Faculty visits	11
	CPR/First Aid Certification	BioMedical Science English 1A DE: Psych 103A, CNA, Health Careers, BioTech I & II	Jr. Achievement Med School Job Shadow CPR/First Aid HOSA Dept. Health Curriculum & Internship	CCC Career Days CCC Faculty visits		CPR/First Aid	CCC Career Days CCC Faculty visits	Psych 103A BioSci 172 Medic 100	DMC Internship Red Cross Internship Project SEED Internship CPR/First Aid	CCC Faculty visits	10
		Dual Enrollment (DE): Psych 103A CNA Nursing	OTI-SFGH Internship, grade?	CCC Faculty visits			CCC Faculty visits		Red Cross Club OTI-SFGH Internship, grade?	CCC Faculty visits	9



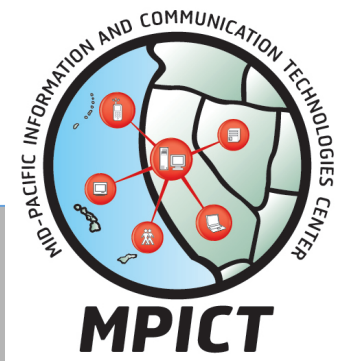
East Bay I-80/880 Pathway Consortium





Information and Communication Technologies (ICT):

A Strategic Economic and Workforce Development Priority





ICT Workforce Demand in the Greater San Francisco Bay Area*

In 2012, ICT industries, the 2nd largest employers in the Bay Area, accounted for:

- 16,360 establishments, 8.7% of the total number of firms in the Bay Area
- 411,335 employees, 10.2% of total industry employment in the SF Bay Area, > 1 in 10 jobs
- 7.3% employment growth, 32,455 net new jobs, between 2012 and 2015,
- 17.2% of the overall employment growth expected for all Bay Area industry employment.





ICT Occupations

- ICT Workforce doesn't just work for ICT industry employers.
- ICT Workforce is strategically essential to most organizations, across all industries
- ICT enables increasing productivity from all workforce and many strategic efforts of all business functions.
- ICT Workforce demand in the Bay Area is large and growing.

In 2012, ICT Workforce in the Bay Area accounted for:

- 333,229 people employed, 8.3% of all Bay Area employees (about 1 in 12 jobs)
- Median annual salaries of about \$90,000

Between 2012 and 2015*, ICT Occupations expect:

20,297 net job growth (6.1%)

21,178 total replacement jobs

43,054 total job openings (8.2% of all job openings)





East Bay ICT Job Growth

East Bay Primary ICT Occupations are expected to have 6,185 job openings, 2,061 annually, between 2012 and 2015. 1,951 of those are net job growth, and 4,234 are replacement jobs.

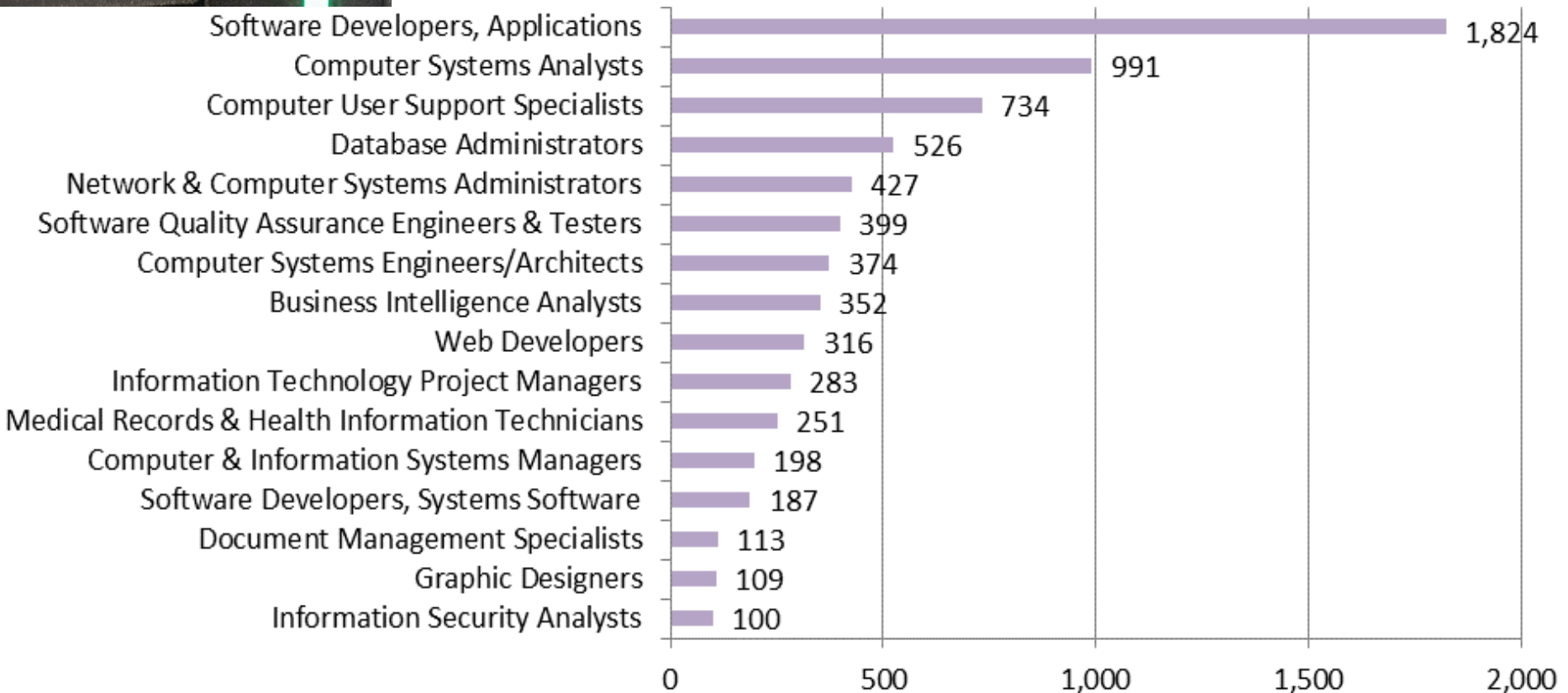
Top 5 Primary ICT Occupations by Total Openings 2012-2015 in the East Bay	Total Openings	% of Total ICT Openings in the East Bay
Software Developers, Applications	716	11.6%
Computer Systems Analysts	688	11.1%
Computer User Support Specialists	594	9.6%
Software Developers, Systems Software	532	8.6%
Network and Computer Systems Administrators	431	7.0%
TOTAL	2,961	47.9%

**MPICT (2014) ICT Demand and Supply Issues and Opportunities in the Greater San Francisco Bay Area*



East Employers Need More ICT Workers

East Bay Top Primary ICT Occupations by 30 Day Online Job Ads in Burning Glass*



*MPICT (2014) ICT Demand and Supply Issues and Opportunities in the Greater San Francisco Bay Area





Economic and Social Impacts

Half of California employers report difficulty finding appropriately skilled ICT Workforce, even in this recent period of high unemployment.*

We need to be able to grow the ICT Workforce needed by Bay Area ICT industries and ICT Workforce employers right here in the Bay Area, for the benefit of our local economies, communities and citizens!

This an equity imperative. There is no way we are going to meet this demand unless there are strategies and effective programs that address each of the many segments of our diverse population, including women, Hispanics, blacks, poor, dislocated workers, veterans, etc.

K-14 public education is in the best position to address these issues and opportunities!



