

Moving Student Supports Online:

*Learning Communities Meeting the
Equity Challenge*

Webinar Series

Wednesday, April 29th

2 p.m. - 3 p.m.



Asking questions & sharing ideas

Use the [chat function](#) on zoom to type your question.

- If you have a **question for a panelist** indicate the program before your question. ex: *PROGRAM NAME How do you....?*
- If you have an **approach** you'd like to share, let us know in the chat. ex: *"IDEA I (Your name) have an approach to the question regarding...."*
- If you have a **tech issue** use the following notation: *"TECH I can't hear."*

Student Supports Webinar Series team



Luis Chavez
Senior Director



Julian West
Director



Cristina Sandoval
Program Associate



Sherry Shojaei
Program Manager



Valeria Torres
Program Coordinator

Welcome to the Moving Student Supports Online webinar!

- The purpose of these webinars are to discuss:
 - Delivering equitable support services.
 - Building on and expanding college redesign and guided pathways.
 - Supporting practitioner exchange and learning.
 - Keeping focus on student needs, engagement and equity.

Video, slides and links will be shared

Today's Webinar Speakers

“Learning Communities Meeting the Equity Challenge”



Nzingha Sonya Dugas
Executive Director
Umoja Community
Education Foundation



Julia Vergara
Co-Executive Director
The Puente Project



Eloy Ortiz Oakley
Chancellor
California Community
Colleges

Nzingha Sonya Dugas

Executive Director

Umoja Community Education
Foundation



Umoja Community Education Foundation



Our Mission: Umoja promotes student success and improved lifetime outcomes for all students through a curriculum that is responsive to the legacy of the African and African American Diasporas. Umoja operates in alignment with the California Community Colleges Chancellor's Office Vision for Success. Umoja support programming focuses on degree attainment, retention, transferability, and career readiness.

Umoja Students Succeed through:

College Orientation and Assessment Process	Intensive Transfer Preparation and Support
Cohort and Learning Community Model	High-touch Support Services
Comprehensive Student Education Plan	Embedded Tutoring and Support
Intentional and Dedicated Counseling	Co-curricular Activities and Field Trips

UMOJA STUDENTS



More than **5,013** Umoja Students participate in our programs and partnerships.



PARTNERSHIPS

68 Umoja Programs
3 Umoja Program Partnership

“ [Umoja] pushed me to be better in school because you have that support system in the Village. When you get to know people, they remind you to do your homework or go to class, turn in your work. ”
-Umoja student

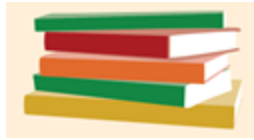
Umoja Students Succeed



When comparing the academic outcomes of Umoja students to non-Umoja students...

First Academic Year Achievements

Umoja students **enrolled in more units** than non-Umoja students



Umoja students **earned more units** than non-Umoja students

Umoja students **successfully completed their first-year coursework at higher rate** than non-Umoja students

Fall-to-Fall Persistence

First-time Umoja students **persisted to the next year at a higher rate** than non-Umoja students



Award Completion

More Umoja students had **earned a Chancellor's Office-approved award within four years** in comparison to their non-Umoja peers

Umoja students **more likely to have earned an associate degree award within four years** in comparison to the non-Umoja peers.



Umoja students were also more likely than their non-Umoja peers to **earn an Associate Degree for Transfer within four years**.

Umoja Community Education Foundation



The Challenges

- Access and Resources: Community College Model Serves Students Least Likely to have Access to Critical Educational Resources
- Understanding the Needs of the Whole Student
- Impact of the Cohort Model on Student Success – Motivation and Learning

Umoja Community Education Foundation

Ideas and Solutions



- Access to technology – internet, computers
- Financial assistance: scholarships, food and housing insecurity, family and technology needs
- More on-line (and in person) academic and mental health counseling
- Faculty professional development: teaching, pedagogy and biases
- Full comprehension of student challenges and providing resources:
 - Adjustment time and support for student development, greater DSP support
 - Imposter syndrome
 - Off Campus environmental challenges (family, housing, employment)
- Diverse assessment of progress models (equity indicators)
- Greater support of Umoja, Puente and similar initiatives

Write your questions in the chat box and we will read them aloud

Questions?



Julia Vergara

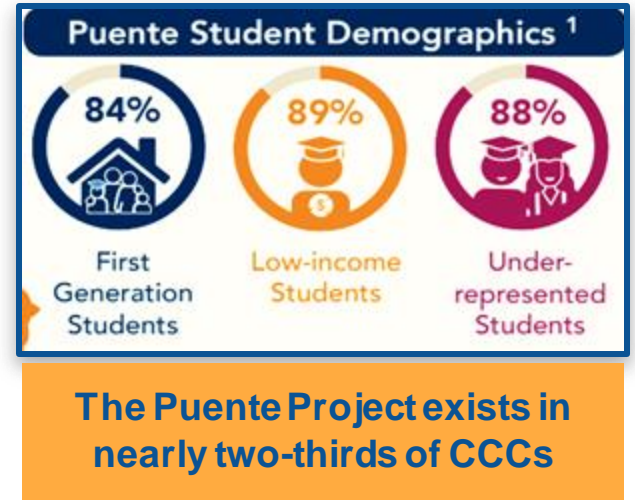
Co-Executive Director
The Puente Project



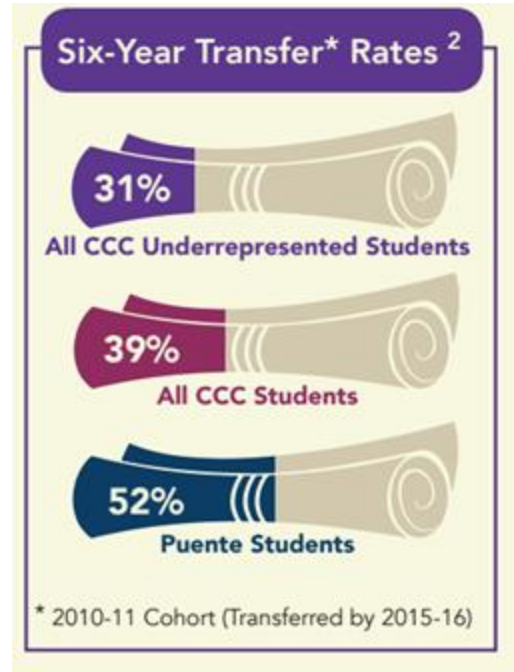
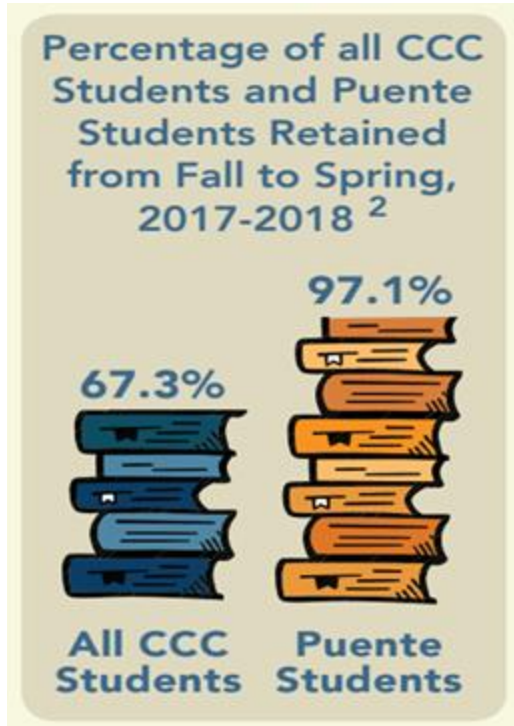
The Puente Project: Getting to the heart of it!

Puente's mission is to increase the number of educationally disadvantaged students who enroll in colleges and universities, earn college degrees, and return to the community as mentors and leaders to future generations.

- **Open to *all* students**
- Interdisciplinary academic rigor
- **Culturally Responsive**
- Equity Minded
- **Asset Based Approaches**
- Social Justice Framework
- **Pedagogy of Cariño**



The Puente Project



The Puente Project

The Challenges



Keeping the focus on equity

- Sustainable ongoing professional development
- Achievement vs. deeper learning
- Taking what works to “scale”

The Puente Project

What do students need to be successful?



Validation Theory

“What we learned is that when external agents took the initiative to validate students, academically and/or interpersonally, students began to believe they could be successful. Students were getting their validating experiences both in- and out-of-class.”

Laura Rendon, *Validating Culturally Diverse Students: Toward a New Model of Learning and Student Development*, 1994

The Puente Project

What do students need to be successful? Cont.

- Online professional development and equity focused resources
- Build online capacity for faculty and students
 - Provide PD opportunities to help faculty retool and rethink online learning
 - Build online capacity for faculty and students
 - Culturally Relevant Training
- Begin to address the loss of learning that has taken place
- Listening sessions with faculty, staff and students

Write your questions in the chat box and we will read them aloud

Questions?

Eloy Ortiz Oakley

Chancellor

California Community Colleges



California
Community
Colleges



Write your questions in the chat box and we will read them aloud

Questions?

Join our BASECAMP Community of Practice



- Home
- Pings
- Hey!
- Activity
- My Stuff
- Find

Go to the Clientside for Public →



Public

CACN, a community of practice sponsored & facilitated by the Career Ladders Project

The CaCN (California Counseling Network) basecamp group, open to ALL student support services professionals and counselors at high schools and community colleges, serves as a communication and exchange tool in support of student success and equity.



Campfire

- Kerry Compton 1:42pm
Not to my knowledge, but I
- Deidre Hill-Valdivia, Ed.D 1:55pm
Thanks, Kerry.

Message Board

- Student Supports Going Virtual!
- Student Supports Going Virtual!

Docs & Files



Resources

- Look for “Platicas”
 - An extended conversation based on the questions we could not get to in the webinar
- Chancellor’s Office
 - COVID-19 webpage
 - Vision Resource Center
- Today’s resources will be emailed to participants and posted at the Vision Resource Center and on the CLP website

Upcoming CLP webinars and GP workshops

- [Redesigning with Transitions in Mind: A Guided Pathways Workshop Webinar Part 2](#)
 - Friday, May 1st from 10 a.m. to 12 noon
- [Problem Solving Webinar Series: Moving Dual Enrollment Online](#)
 - Every other Thursday, starting May 7th from 10 a.m. -11 a.m
- [Moving Student Services Online](#)
 - Every other Wednesday, starting May 13th from 2 p.m. to 3 p.m.

Questions? Email CSandoval@careerladdersproject.org

Upcoming Puente Webinars

Culturally- Responsive, Equity- Minded Webinars



29 APRIL

Moving Student Support Online: Learning Communities Meeting the Equity Challenge

Facilitated by Julia Vergara, Co-Executive Director, Puente Project and Nzigha Dugas, Executive Director, Umoja

Puente and Umoja leaders will discuss COVID19 impact on our most vulnerable and underserved populations and offer support based on program best practices.

8 MAY

Getting to the Heart of It: Sharing our Experiences with Online Teaching and Learning

Are you concerned about how to equitably serve ALL of our Cabrillo students? This listening session, facilitated by the statewide Puente Project, will give Cabrillo faculty and staff a chance to share their experiences and needs, and will be used to plan future trainings.

Future Listening Sessions

Online Learning: Building Student Centered Classrooms

Instructors will explore teaching strategies to create community and sustain student-centered learning in a digital environment.

Counseling Support: Motivating Students during this Covid-19 Crisis

Counselors and instructors will discuss approaches and resources for supporting students' social emotional well-being during this difficult time. Facilitated by Dr. Laura Rendon, UT San Antonio

Equity: Culturally Responsive Pedagogy

Faculty will be introduced to the core principles of Puente's culturally responsive teaching in order to cultivate optimal learning spaces where all students feel supported.

*THANK YOU
for joining us today*

This webinar is part of a series produced by Career Ladders Project with funding from the California Community Colleges Chancellor's Office.